



TYDP2 rabbit pAb

Catalog No	BYab-11667
Isotype	IgG
Reactivity	Human; Mouse;Rat
Applications	WB
Gene Name	TDP2 EAP2 TTRAP AD-022
Protein Name	TYDP2
Immunogen	Synthesized peptide derived from human TYDP2 AA range: 261-311
Specificity	This antibody detects endogenous levels of TYDP2 at Human/Mouse/Rat
Formulation	Liquid in PBS containing 50% glycerol, 0.5% BSA and 0.02% sodium azide.
Source	Polyclonal, Rabbit,IgG
Purification	The antibody was affinity-purified from rabbit serum by affinity-chromatography using specific immunogen.
Dilution	WB 1: 500-2000
Concentration	1 mg/ml
Purity	≥90%
Storage Stability	-20°C/1 year
Synonyms	
Observed Band	
Cell Pathway	Nucleus . Nucleus, PML body . Nucleus, nucleolus . Cytoplasm. Localizes to nucleolar cavities following stress; localization to nucleolus is dependent on PML protein. .; Cytoplasm . (Microbial infection) In case of infection by picornavirus, relocalizes to cytoplasmic sites distinct from those containing viral proteins associated with RNA replication or encapsidation. .
Tissue Specificity	Widely expressed (PubMed:10764746). Highly expressed in various brain regions, including the frontal and occipital lobes, the hippocampus, the striatum and the cerebellum (PubMed:24658003).
Function	
Background	This gene encodes a member of a superfamily of divalent cation-dependent phosphodiesterases. The encoded protein associates with CD40, tumor necrosis factor (TNF) receptor-75 and TNF receptor associated factors (TRAFs), and inhibits nuclear factor-kappa-B activation. This protein has sequence and structural similarities with APE1 endonuclease, which is involved in both DNA

Nanjing BYabscience technology Co.,Ltd



repair and the activation of transcription factors. [provided by RefSeq, Jul 2008],

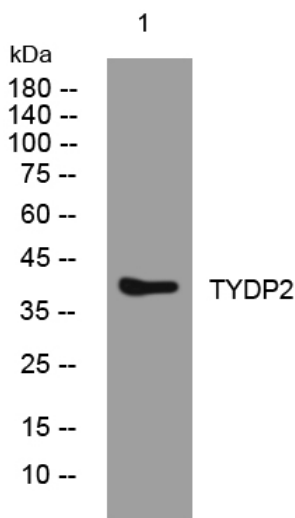
matters needing attention

Avoid repeated freezing and thawing!

Usage suggestions

This product can be used in immunological reaction related experiments. For more information, please consult technical personnel.

Products Images



Western blot analysis of lysates from 293T cells, primary antibody was diluted at 1:1000, 4°over night