



PMM1 rabbit pAb

Catalog No	BYab-11669
Isotype	IgG
Reactivity	Human; Mouse
Applications	WB;IHC
Gene Name	PMM1 PMMH22
Protein Name	PMM1
Immunogen	Synthesized peptide derived from human PMM1 AA range: 18-68
Specificity	This antibody detects endogenous levels of PMM1 at Human/Mouse
Formulation	Liquid in PBS containing 50% glycerol, 0.5% BSA and 0.02% sodium azide.
Source	Polyclonal, Rabbit,IgG
Purification	The antibody was affinity-purified from rabbit serum by affinity-chromatography using specific immunogen.
Dilution	WB 1:500-2000;IHC-p 1:50-300
Concentration	1 mg/ml
Purity	≥90%
Storage Stability	-20°C/1 year
Synonyms	
Observed Band	
Cell Pathway	Cytoplasm .
Tissue Specificity	Strong expression in liver, heart, brain, and pancreas; lower expression in skeletal muscle.
Function	catalytic activity:Alpha-D-mannose 1-phosphate = D-mannose 6-phosphate.,function:Involved in the synthesis of the GDP-mannose and dolichol-phosphate-mannose required for a number of critical mannosyl transfer reactions.,pathway:Nucleotide-sugar biosynthesis; GDP-D-mannose biosynthesis; alpha-D-mannose 1-phosphate from D-fructose 6-phosphate: step 2/2.,similarity:Belongs to the eukaryotic PMM family.,tissue specificity:Strong expression in liver, heart, brain, and pancreas; lower expression in skeletal muscle.,
Background	Phosphomannomutase catalyzes the conversion between D-mannose 6-phosphate and D-mannose 1-phosphate which is a substrate for GDP-mannose synthesis. GDP-mannose is used for synthesis of dolichol-phosphate-mannose,

Nanjing BYabscience technology Co.,Ltd



which is essential for N-linked glycosylation and thus the secretion of several glycoproteins as well as for the synthesis of glycosyl-phosphatidyl-inositol (GPI) anchored proteins. [provided by RefSeq, Jul 2008],

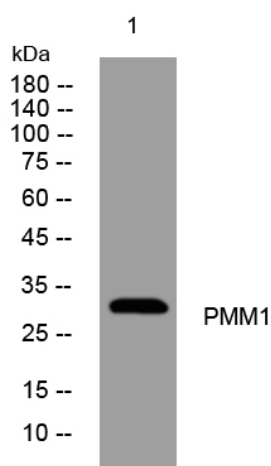
matters needing attention

Avoid repeated freezing and thawing!

Usage suggestions

This product can be used in immunological reaction related experiments. For more information, please consult technical personnel.

Products Images



Western blot analysis of lysates from Hela cells, primary antibody was diluted at 1:1000, 4° over night

Immunohistochemical analysis of paraffin-embedded human liver cancer. 1, Antibody was diluted at 1:200(4° overnight). 2, Tris-EDTA, pH9.0 was used for antigen retrieval. 3, Secondary antibody was diluted at 1:200(room temperature, 45min).