



TIM8B rabbit pAb

Catalog No	BYab-11671
Isotype	IgG
Reactivity	Human; Mouse;Rat
Applications	IHC;IF
Gene Name	TIMM8B DDP2 DDPL TIM8B
Protein Name	TIM8B
Immunogen	Synthesized peptide derived from human TIM8B AA range: 1-51
Specificity	This antibody detects endogenous levels of TIM8B at Human/Mouse/Rat
Formulation	Liquid in PBS containing 50% glycerol, 0.5% BSA and 0.02% sodium azide.
Source	Polyclonal, Rabbit,IgG
Purification	The antibody was affinity-purified from rabbit serum by affinity-chromatography using specific immunogen.
Dilution	IHC-p 1: 50-200. IF 1:50-200
Concentration	1 mg/ml
Purity	≥90%
Storage Stability	-20°C/1 year
Synonyms	
Observed Band	
Cell Pathway	Mitochondrion inner membrane ; Peripheral membrane protein ; Intermembrane side .
Tissue Specificity	Ubiquitous, with highest expression in heart, kidney, liver and skeletal muscle.
Function	domain:The twin CX3C motif contains 4 conserved Cys residues that form 2 disulfide bonds in the mitochondrial intermembrane space. However, during the transit of TIMM8B from cytoplasm into mitochondrion, the Cys residues probably coordinate zinc, thereby preventing folding and allowing its transfer across mitochondrial outer membrane.,function:Probable mitochondrial intermembrane chaperone that participates in the import and insertion of some multi-pass transmembrane proteins into the mitochondrial inner membrane. Also required for the transfer of beta-barrel precursors from the TOM complex to the sorting and assembly machinery (SAM complex) of the outer membrane. Acts as a chaperone-like protein that protects the hydrophobic precursors from aggregation and guide them through the mitochondrial intermembrane space.,similarity:Belongs to the small Tim family.,subunit:Heterohexamer; possibl

Nanjing BYabscience technology Co.,Ltd



Background

This gene encodes a member of a well-conserved family of proteins with similarity to yeast Tim mitochondrial import proteins. This gene is encoded by a nuclear gene and is transported into the intermembrane space of the mitochondrion. When formed into complexes, these proteins guide membrane-spanning proteins across the mitochondrial intermembrane space before they are added into the mitochondrial inner membrane. This gene is adjacent to succinate dehydrogenase, subunit D (SDHD), in which mutations have been found in affected members of families with hereditary paraganglioma.[provided by RefSeq, Aug 2009],

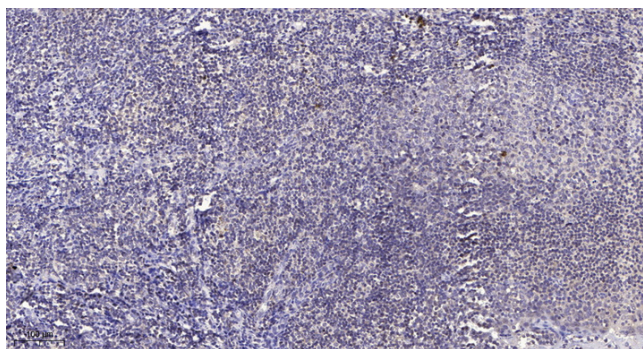
matters needing attention

Avoid repeated freezing and thawing!

Usage suggestions

This product can be used in immunological reaction related experiments. For more information, please consult technical personnel.

Products Images



Immunohistochemical analysis of paraffin-embedded human tonsil. 1, Antibody was diluted at 1:200(4° overnight). 2, Tris-EDTA,pH9.0 was used for antigen retrieval. 3,Secondary antibody was diluted at 1:200(room temperature, 30min).