



TTYH2 rabbit pAb

Catalog No	BYab-11686
Isotype	IgG
Reactivity	Human; Mouse
Applications	WB
Gene Name	TTYH2 C17orf29
Protein Name	TTYH2
Immunogen	Synthesized peptide derived from human TTYH2 AA range: 319-369
Specificity	This antibody detects endogenous levels of TTYH2 at Human/Mouse
Formulation	Liquid in PBS containing 50% glycerol, 0.5% BSA and 0.02% sodium azide.
Source	Polyclonal, Rabbit,IgG
Purification	The antibody was affinity-purified from rabbit serum by affinity-chromatography using specific immunogen.
Dilution	WB 1: 500-2000
Concentration	1 mg/ml
Purity	≥90%
Storage Stability	-20°C/1 year
Synonyms	
Observed Band	
Cell Pathway	Cell membrane ; Multi-pass membrane protein .
Tissue Specificity	Expressed at higher level in brain and testis and at lower levels in heart, ovary, spleen and peripheral blood leukocytes. Up-regulated in 13 of 16 renal cell carcinoma samples examined. Up-regulated in colon carcinoma.
Function	function:Probable large-conductance Ca(2+)-activated chloride channel. May play a role in Ca(2+) signal transduction. May be involved in cell proliferation and cell aggregation.,similarity:Belongs to the tweety family.,tissue specificity:Expressed at higher level in brain and testis and at lower levels in heart, ovary, spleen and peripheral blood leukocytes. Up-regulated in 13 of 16 renal cell carcinoma samples examined. Up-regulated in colon carcinoma.,
Background	This gene encodes a member of the tweety family of proteins. Members of this family function as chloride anion channels. The encoded protein functions as a calcium(2+)-activated large conductance chloride(-) channel, and may play a role in kidney tumorigenesis. Two transcript variants encoding distinct isoforms have

Nanjing BYabs science technology Co.,Ltd



been identified for this gene. [provided by RefSeq, Jul 2008],

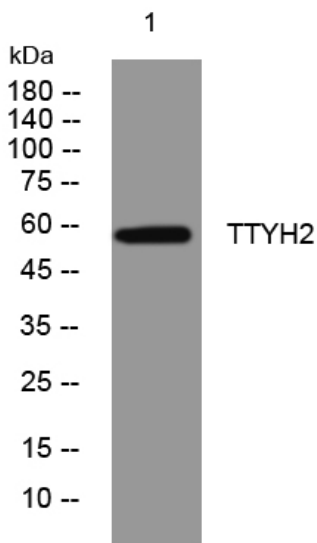
matters needing attention

Avoid repeated freezing and thawing!

Usage suggestions

This product can be used in immunological reaction related experiments. For more information, please consult technical personnel.

Products Images



Western blot analysis of lysates from 293T cells,
primary antibody was diluted at 1:1000, 4° over night