



NELL2 rabbit pAb

| | |
|--------------------|---|
| Catalog No | BYab-11723 |
| Isotype | IgG |
| Reactivity | Human; Mouse;Rat |
| Applications | WB |
| Gene Name | NELL2 NRP2 |
| Protein Name | NELL2 |
| Immunogen | Synthesized peptide derived from human NELL2 AA range: 509-559 |
| Specificity | This antibody detects endogenous levels of NELL2 at Human/Mouse/Rat |
| Formulation | Liquid in PBS containing 50% glycerol, 0.5% BSA and 0.02% sodium azide. |
| Source | Polyclonal, Rabbit,IgG |
| Purification | The antibody was affinity-purified from rabbit serum by affinity-chromatography using specific immunogen. |
| Dilution | WB 1: 500-2000 |
| Concentration | 1 mg/ml |
| Purity | ≥90% |
| Storage Stability | -20°C/1 year |
| Synonyms | |
| Observed Band | |
| Cell Pathway | Secreted . |
| Tissue Specificity | |
| Function | similarity:Contains 1 TSP N-terminal (TSPN) domain.,similarity:Contains 5 VWFC domains.,similarity:Contains 6 EGF-like domains.,subunit:Homotrimer. Binds to PKC beta-1., |
| Background | The protein encoded by this gene is a glycoprotein containing several von Willebrand factor C domains and epidermal growth factor (EGF)-like domains. The encoded protein acts as a homotrimer and is found in the cytoplasm. Several variants encoding a few different isoforms exist, and at least one isoform appears to be a secreted protein. Studies in mouse suggest that this protein plays a role in neural cell growth and differentiation as well as in oncogenesis. [provided by RefSeq, Feb 2009], |

Nanjing BYabscience technology Co.,Ltd



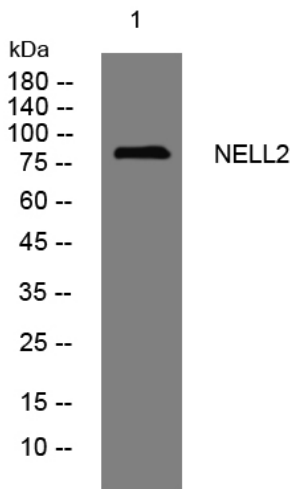
matters needing attention

Avoid repeated freezing and thawing!

Usage suggestions

This product can be used in immunological reaction related experiments. For more information, please consult technical personnel.

Products Images



Western blot analysis of lysates from HeLa cells, primary antibody was diluted at 1:1000, 4° over night