



RIP rabbit pAb

Catalog No	BYab-11726
Isotype	IgG
Reactivity	Human; Mouse;Rat
Applications	WB;ELISA;IHC
Gene Name	RPAIN RIP
Protein Name	RIP
Immunogen	Synthesized peptide derived from human RIP AA range: 117-167
Specificity	This antibody detects endogenous levels of RIP at Human/Mouse/Rat
Formulation	Liquid in PBS containing 50% glycerol, 0.5% BSA and 0.02% sodium azide.
Source	Polyclonal, Rabbit,IgG
Purification	The antibody was affinity-purified from rabbit serum by affinity-chromatography using specific immunogen.
Dilution	WB 1:500-2000;IHC-p 1:50-300; ELISA 2000-20000
Concentration	1 mg/ml
Purity	≥90%
Storage Stability	-20°C/1 year
Synonyms	
Observed Band	
Cell Pathway	[Isoform 1]: Cytoplasm. Nucleus.; [Isoform 2]: Nucleus, PML body.
Tissue Specificity	Widely expressed. Expressed in pancreas, kidney, muscle, liver, lung, placenta, brain, heart, leukocytes, colon, intestine, ovary, testis, prostate, thymus and spleen.
Function	function:Mediates the import of RPA complex into the nucleus, possibly via some interaction with importin beta. Isoform 2 is sumoylated and mediates the localization of RPA complex into the PML body of the nucleus, thereby participating in RPA function in DNA metabolism.;PTM:Isoform 2 is sumoylated. Sumoylation is required for localization in the nuclear PML body and transport of RPA complex in PML body. Upon UV irradiation and during S phase, it is desumoylated, releasing RPA complex that is translocated to sites of DNA damage. Sumoylation takes place at different Lys residues.;similarity:Contains 1 RIP-type zinc finger.;subcellular location:Only nuclear, localizes to PML body.;subunit:Interacts with the RPA1 subunit of RPA complex.;tissue specificity:Widely expressed. Expressed in pancreas, kidney, muscle, liver, lung,

Nanjing BYabscience technology Co.,Ltd



placenta, brain, heart, leukocytes, colon, intestine, ovary, testis

Background

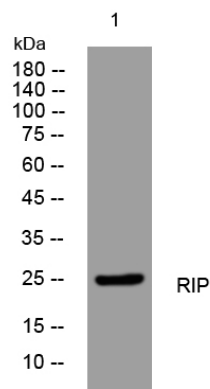
matters needing attention

Avoid repeated freezing and thawing!

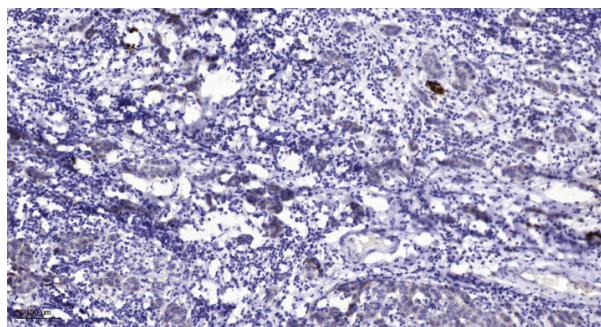
Usage suggestions

This product can be used in immunological reaction related experiments. For more information, please consult technical personnel.

Products Images



Western blot analysis of lysates from Hela cells, primary antibody was diluted at 1:1000, 4° over night



Immunohistochemical analysis of paraffin-embedded human Breast cancer. 1, Antibody was diluted at 1:200(4° overnight). 2, Tris-EDTA, pH9.0 was used for antigen retrieval. 3, Secondary antibody was diluted at 1:200(room temperature, 45min).

Nanjing BYabs science technology Co.,Ltd

网址: www.njbybio.com

官方热线: 025-5229-8998

监督电话: 15950492658