



KBP rabbit pAb

Catalog No	BYab-11739
Isotype	IgG
Reactivity	Human; Mouse;Rat
Applications	WB;IHC
Gene Name	KIAA1279 KBP
Protein Name	KBP
Immunogen	Synthesized peptide derived from human KBP AA range: 542-592
Specificity	This antibody detects endogenous levels of KBP at Human/Mouse/Rat
Formulation	Liquid in PBS containing 50% glycerol, 0.5% BSA and 0.02% sodium azide.
Source	Polyclonal, Rabbit,IgG
Purification	The antibody was affinity-purified from rabbit serum by affinity-chromatography using specific immunogen.
Dilution	WB 1:500-2000;IHC-p 1:50-300
Concentration	1 mg/ml
Purity	≥90%
Storage Stability	-20°C/1 year
Synonyms	
Observed Band	
Cell Pathway	Cytoplasm, cytoskeleton .
Tissue Specificity	Highly expressed in heart, brain, ovary, testis, spinal cord and all specific brain regions examined. Moderate expressed at intermediate level in all other adult tissues examined, as well as in fetal liver and brain. Not expressed in blood leukocytes.
Function	disease:Defects in KIAA1279 are the cause of Goldberg-Shprintzen megacolon syndrome (GOSHS) [MIM:609460]. GOSHS is characterized by microcephaly, mental retardation and facial dysmorphism, as well as phenotypes related to Hirschsprung disease syndrome.,function:Required for organization of axonal microtubules, and axonal outgrowth and maintenance during peripheral and central nervous system development. Regulates mitochondrial transport by modulating KIF1B motor activity.,similarity:Belongs to the KIF1-binding protein family.,subunit:Interacts with KIF1B.,tissue specificity:Highly expressed in heart, brain, ovary, testis, spinal cord and all specific brain regions examined. Moderate expressed at intermediate level in all other adult tissues examined, as well as in

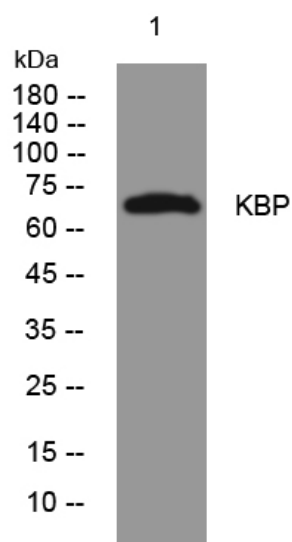
Nanjing BYabs science technology Co.,Ltd



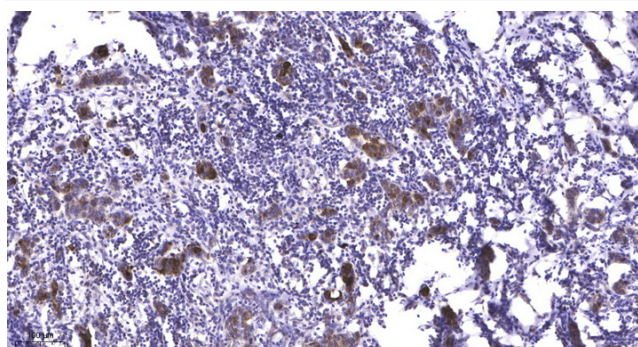
fetal liver and brain. Not expressed in blood leukocytes.,

Background	This gene encodes a kinesin family member 1 binding protein that is characterized by two tetratricopeptide repeats. The encoded protein localizes to the mitochondria and may be involved in regulating transport of the mitochondria. Mutations in this gene are associated with Goldberg-Shprintzen megacolon syndrome. [provided by RefSeq, Mar 2010],
matters needing attention	Avoid repeated freezing and thawing!
Usage suggestions	This product can be used in immunological reaction related experiments. For more information, please consult technical personnel.

Products Images



Western blot analysis of lysates from Jarkat cells, primary antibody was diluted at 1:1000, 4° over night



Immunohistochemical analysis of paraffin-embedded human Breast cancer. 1, Antibody was diluted at 1:200(4° overnight). 2, Tris-EDTA, pH9.0 was used for antigen retrieval. 3, Secondary antibody was diluted at 1:200(room temperature, 45min).

Nanjing BYabs science technology Co.,Ltd

网址: www.njbybio.com

官方热线: 025-5229-8998

监督电话: 15950492658