



# CNIH2 rabbit pAb

<b>Catalog No</b>	BYab-11792
<b>Isotype</b>	IgG
<b>Reactivity</b>	Human; Mouse;Rat
<b>Applications</b>	WB
<b>Gene Name</b>	CNIH2 CNIL
<b>Protein Name</b>	CNIH2
<b>Immunogen</b>	Synthesized peptide derived from human CNIH2 AA range: 10-60
<b>Specificity</b>	This antibody detects endogenous levels of CNIH2 at Human/Mouse/Rat
<b>Formulation</b>	Liquid in PBS containing 50% glycerol, 0.5% BSA and 0.02% sodium azide.
<b>Source</b>	Polyclonal, Rabbit,IgG
<b>Purification</b>	The antibody was affinity-purified from rabbit serum by affinity-chromatography using specific immunogen.
<b>Dilution</b>	WB 1: 500-2000
<b>Concentration</b>	1 mg/ml
<b>Purity</b>	≥90%
<b>Storage Stability</b>	-20°C/1 year
<b>Synonyms</b>	
<b>Observed Band</b>	
<b>Cell Pathway</b>	Endoplasmic reticulum membrane ; Multi-pass membrane protein . Cell junction, synapse, postsynaptic cell membrane ; Multi-pass membrane protein . Cell projection, dendrite . Cell projection, dendritic spine . Cell junction, synapse, postsynaptic density . Also localizes to the cell membrane of extrasynaptic sites (dendritic shafts, spines of pyramidal cells). .
<b>Tissue Specificity</b>	Expression is up-regulated in dorsolateral prefrontal cortex of patients with schizophrenia (postmortem brain study).
<b>Function</b>	function:Involved in the transport and maturation of proteins.,similarity:Belongs to the cornichon family.,
<b>Background</b>	The protein encoded by this gene is an auxiliary subunit of the ionotropic glutamate receptor of the AMPA subtype. AMPA receptors mediate fast synaptic neurotransmission in the central nervous system. This protein has been reported to interact with the Type I AMPA receptor regulatory protein isoform gamma-8 to control assembly of hippocampal AMPA receptor complexes, thereby modulating receptor gating and pharmacology. Alternative splicing results in multiple

**Nanjing BYabscience technology Co.,Ltd**



transcript variants. [provided by RefSeq, Aug 2012],

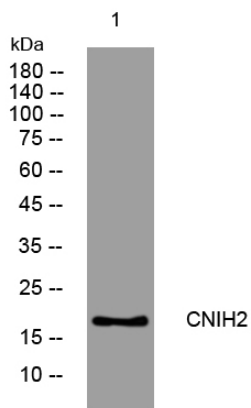
**matters needing attention**

Avoid repeated freezing and thawing!

**Usage suggestions**

This product can be used in immunological reaction related experiments. For more information, please consult technical personnel.

## Products Images



Western blot analysis of lysates from MCF-7 cells, primary antibody was diluted at 1:1000, 4° over night