



NEO1 rabbit pAb

Catalog No	BYab-11804
Isotype	IgG
Reactivity	Human; Mouse;Rat
Applications	WB
Gene Name	NEO1 IGDCC2 NGN
Protein Name	NEO1
Immunogen	Synthesized peptide derived from human NEO1 AA range: 82-132
Specificity	This antibody detects endogenous levels of NEO1 at Human/Mouse/Rat
Formulation	Liquid in PBS containing 50% glycerol, 0.5% BSA and 0.02% sodium azide.
Source	Polyclonal, Rabbit,IgG
Purification	The antibody was affinity-purified from rabbit serum by affinity-chromatography using specific immunogen.
Dilution	WB 1: 500-2000
Concentration	1 mg/ml
Purity	≥90%
Storage Stability	-20°C/1 year
Synonyms	
Observed Band	
Cell Pathway	Cell membrane; Single-pass type I membrane protein.
Tissue Specificity	Widely expressed and also in cancer cell lines.
Function	alternative products:Additional isoforms seem to exist,function:May be involved as a regulatory protein in the transition of undifferentiated proliferating cells to their differentiated state. May also function as a cell adhesion molecule in a broad spectrum of embryonic and adult tissues.,similarity:Belongs to the immunoglobulin superfamily. DCC family.,similarity:Contains 4 Ig-like C2-type (immunoglobulin-like) domains.,similarity:Contains 6 fibronectin type-III domains.,tissue specificity:Widely expressed and also in cancer cell lines.,
Background	This gene encodes a cell surface protein that is a member of the immunoglobulin superfamily. The encoded protein consists of four N-terminal immunoglobulin-like domains, six fibronectin type III domains, a transmembrane domain and a C-terminal internal domain that shares homology with the tumor suppressor

Nanjing BYabscience technology Co.,Ltd



candidate gene DCC. This protein may be involved in cell growth and differentiation and in cell-cell adhesion. Defects in this gene are associated with cell proliferation in certain cancers. Alternate splicing results in multiple transcript variants. [provided by RefSeq, Feb 2010],

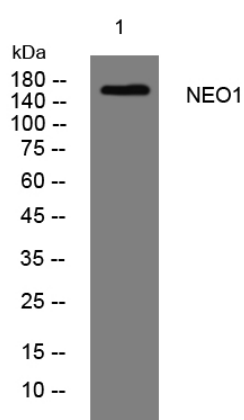
matters needing attention

Avoid repeated freezing and thawing!

Usage suggestions

This product can be used in immunological reaction related experiments. For more information, please consult technical personnel.

Products Images



Western blot analysis of lysates from HpeG2 cells, primary antibody was diluted at 1:1000, 4° over night