



# MOT10 rabbit pAb

<b>Catalog No</b>	BYab-11812
<b>Isotype</b>	IgG
<b>Reactivity</b>	Human; Mouse;Rat
<b>Applications</b>	WB;IHC
<b>Gene Name</b>	SLC16A10 MCT10 TAT1
<b>Protein Name</b>	MOT10
<b>Immunogen</b>	Synthesized peptide derived from human MOT10 AA range: 163-213
<b>Specificity</b>	This antibody detects endogenous levels of MOT10 at Human/Mouse/Rat
<b>Formulation</b>	Liquid in PBS containing 50% glycerol, 0.5% BSA and 0.02% sodium azide.
<b>Source</b>	Polyclonal, Rabbit,IgG
<b>Purification</b>	The antibody was affinity-purified from rabbit serum by affinity-chromatography using specific immunogen.
<b>Dilution</b>	WB 1:500-2000;IHC-p 1:50-300
<b>Concentration</b>	1 mg/ml
<b>Purity</b>	≥90%
<b>Storage Stability</b>	-20°C/1 year
<b>Synonyms</b>	
<b>Observed Band</b>	
<b>Cell Pathway</b>	Cell membrane ; Multi-pass membrane protein . Basolateral cell membrane .
<b>Tissue Specificity</b>	Strongly expressed in kidney and skeletal muscle and at lower level in placenta and heart.
<b>Function</b>	function:Sodium-independent transporter that mediates the update of aromatic acid. Can function as a net efflux pathway for aromatic amino acids in the basolateral epithelial cells.,PTM:Not N-glycosylated.,similarity:Belongs to the major facilitator superfamily. Monocarboxylate porter (TC 2.A.1.13) family.,tissue specificity:Strongly expressed in kidney and skeletal muscle and at lower level in placenta and heart.,
<b>Background</b>	SLC16A10 is a member of a family of plasma membrane amino acid transporters that mediate the Na(+)-independent transport of aromatic amino acids across the plasma membrane.[supplied by OMIM, Apr 2004],

**Nanjing BYabscience technology Co.,Ltd**



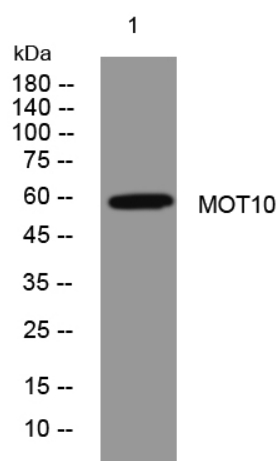
**matters needing attention**

Avoid repeated freezing and thawing!

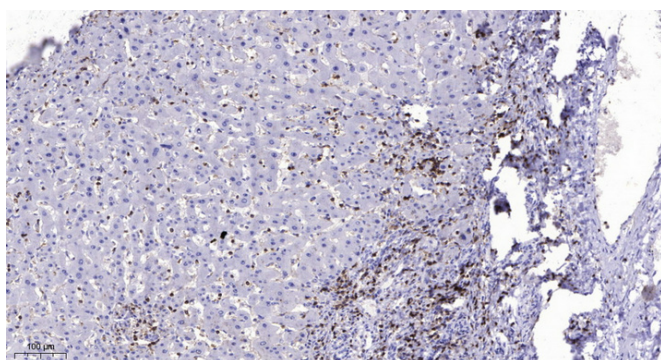
**Usage suggestions**

This product can be used in immunological reaction related experiments. For more information, please consult technical personnel.

**Products Images**



Western blot analysis of lysates from 293T cells, primary antibody was diluted at 1:1000, 4° over night



Immunohistochemical analysis of paraffin-embedded human liver cancer. 1, Antibody was diluted at 1:200(4° overnight). 2, Tris-EDTA, pH9.0 was used for antigen retrieval. 3, Secondary antibody was diluted at 1:200(room temperature, 45min).

**Nanjing BYabs science technology Co.,Ltd**

网址: [www.njbybio.com](http://www.njbybio.com)

官方热线: 025-5229-8998

监督电话: 15950492658