



# ROP1A rabbit pAb

<b>Catalog No</b>	BYab-11818
<b>Isotype</b>	IgG
<b>Reactivity</b>	Human;Rat;Mouse;
<b>Applications</b>	WB;IHC
<b>Gene Name</b>	ROPN1 ROPN1A
<b>Protein Name</b>	ROP1A
<b>Immunogen</b>	Synthesized peptide derived from human ROP1A AA range: 85-135
<b>Specificity</b>	This antibody detects endogenous levels of ROP1A at Human
<b>Formulation</b>	Liquid in PBS containing 50% glycerol, 0.5% BSA and 0.02% sodium azide.
<b>Source</b>	Polyclonal, Rabbit,IgG
<b>Purification</b>	The antibody was affinity-purified from rabbit serum by affinity-chromatography using specific immunogen.
<b>Dilution</b>	WB 1:500-2000;IHC-p 1:50-300
<b>Concentration</b>	1 mg/ml
<b>Purity</b>	≥90%
<b>Storage Stability</b>	-20°C/1 year
<b>Synonyms</b>	
<b>Observed Band</b>	
<b>Cell Pathway</b>	Cell projection, cilium, flagellum . In the sperm tail, found in the principal piece and in the cytoplasmic droplet located at the distal end of the midpiece. Inner surface of the fibrous sheath. .
<b>Tissue Specificity</b>	Testis specific in adult. Overexpressed in hematologic tumor cells.
<b>Function</b>	developmental stage:Expressed in fetal liver.,domain:The RIIa domain mediates interaction with AKAP3.,miscellaneous:The name 'ropporin' comes from the Japanese word 'oppo' which means 'tail',similarity:Belongs to the ropporin family.,similarity:Contains 1 RIIa domain.,subcellular location:In the sperm tail, found in the principal piece and in the cytoplasmic droplet located at the distal end of the midpiece. Inner surface of the fibrous sheath.,subunit:Homodimer. Interacts with AKAP3 and RHPN1 (By similarity). May interact with SPA17.,tissue specificity:Testis specific in adult. Overexpressed in hematologic tumor cells.,
<b>Background</b>	The protein encoded by this gene is found in the fibrous sheath of spermatazoa, where it interacts with rhophilin, a Rho GTPase binding protein. The encoded

**Nanjing BYabscience technology Co.,Ltd**



protein also can bind an A-kinase anchoring protein (AKAP110) and a calcium-binding tyrosine phosphorylation-regulated protein (CABYR). This protein may be involved in sperm motility and has been shown to be a cancer-testis antigen in hematologic malignancies. Several transcript variants, some protein-coding and some non-protein coding, have been found for this gene. [provided by RefSeq, Dec 2015],

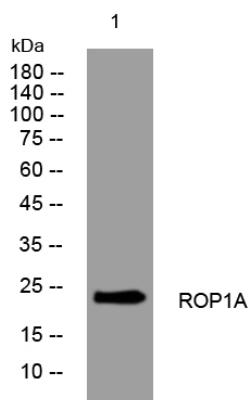
#### matters needing attention

Avoid repeated freezing and thawing!

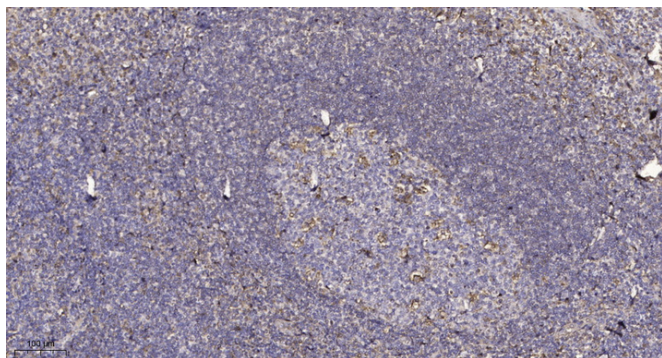
#### Usage suggestions

This product can be used in immunological reaction related experiments. For more information, please consult technical personnel.

### Products Images



Western blot analysis of lysates from HeLa cells, primary antibody was diluted at 1:1000, 4° over night



Immunohistochemical analysis of paraffin-embedded human tonsil. 1, Antibody was diluted at 1:200(4° overnight). 2, Tris-EDTA, pH9.0 was used for antigen retrieval. 3, Secondary antibody was diluted at 1:200(room temperature, 45min).