



K1C28 rabbit pAb

Catalog No	BYab-11856
Isotype	IgG
Reactivity	Human; Mouse
Applications	WB;IHC
Gene Name	KRT28 KRT25D
Protein Name	K1C28
Immunogen	Synthesized peptide derived from human K1C28 AA range: 324-374
Specificity	This antibody detects endogenous levels of K1C28 at Human/Mouse
Formulation	Liquid in PBS containing 50% glycerol, 0.5% BSA and 0.02% sodium azide.
Source	Polyclonal, Rabbit,IgG
Purification	The antibody was affinity-purified from rabbit serum by affinity-chromatography using specific immunogen.
Dilution	WB 1:500-2000;IHC-p 1:50-300
Concentration	1 mg/ml
Purity	≥90%
Storage Stability	-20°C/1 year
Synonyms	
Observed Band	
Cell Pathway	Cytoplasm .
Tissue Specificity	Strongly expressed in skin and scalp, and weak expression observed in thymus. In the hair follicle, expressed in Henle layer, Huxley layer and in the irs cuticle. Expression extends from the bulb region up to the point of differentiation into the three layers. Also present in the medulla of beard hair (at protein level).
Function	function:Essential for the proper assembly of types I and II keratin protein complexes and the formation of keratin intermediate filaments in the inner root sheath (irs).,miscellaneous:There are two types of cytoskeletal and microfibrillar keratin: I (acidic; 40-55 kDa) and II (neutral to basic; 56-70 kDa).,similarity:Belongs to the intermediate filament family.,subunit:Heterotetramer of two type I and two type II keratins.,tissue specificity:Strongly expressed in skin and scalp, and weak expression observed in thymus. In the hair follicle, expressed in Henle layer, Huxley layer and in the irs cuticle. Expression extends from the bulb region up to the point of differentiation into the three layers. Also present in the medulla of beard hair (at protein level).,

Nanjing BYabscience technology Co.,Ltd



Background

This gene encodes a member of the type I (acidic) keratin family, which belongs to the superfamily of intermediate filament (IF) proteins. Keratins are heteropolymeric structural proteins which form the intermediate filament. These filaments, along with actin microfilaments and microtubules, compose the cytoskeleton of epithelial cells. The type I keratin genes are clustered in a region of chromosome 17q12-q21. [provided by RefSeq, Jul 2009],

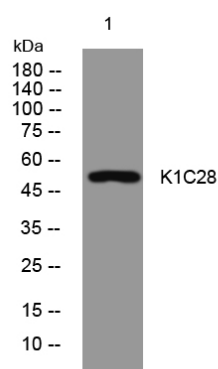
matters needing attention

Avoid repeated freezing and thawing!

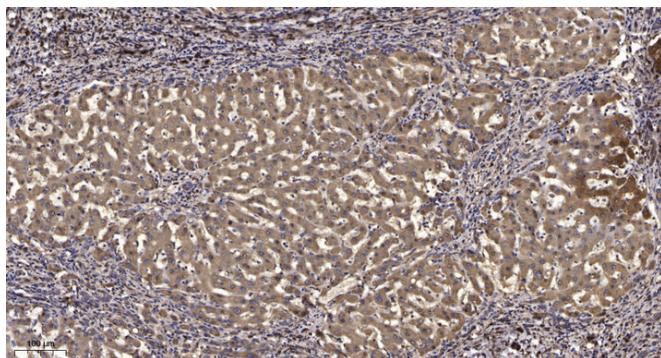
Usage suggestions

This product can be used in immunological reaction related experiments. For more information, please consult technical personnel.

Products Images



Western blot analysis of lysates from HeLa cells, primary antibody was diluted at 1:1000, 4° over night



Immunohistochemical analysis of paraffin-embedded human liver cancer. 1, Antibody was diluted at 1:200(4° overnight). 2, Tris-EDTA, pH9.0 was used for antigen retrieval. 3, Secondary antibody was diluted at 1:200(room temperature, 45min).