



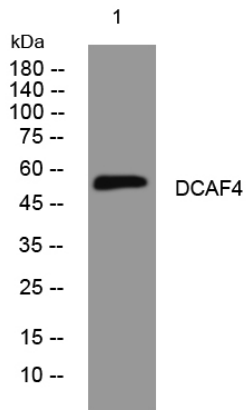
DCAF4 rabbit pAb

Catalog No	BYab-11923
Isotype	IgG
Reactivity	Human;Rat;Mouse;
Applications	WB
Gene Name	DCAF4 WDR21 WDR21A
Protein Name	DCAF4
Immunogen	Synthesized peptide derived from human DCAF4 AA range: 385-435
Specificity	This antibody detects endogenous levels of DCAF4 at Human
Formulation	Liquid in PBS containing 50% glycerol, 0.5% BSA and 0.02% sodium azide.
Source	Polyclonal, Rabbit,IgG
Purification	The antibody was affinity-purified from rabbit serum by affinity-chromatography using specific immunogen.
Dilution	WB 1: 500-2000
Concentration	1 mg/ml
Purity	≥90%
Storage Stability	-20°C/1 year
Synonyms	
Observed Band	
Cell Pathway	Cul4-RING E3 ubiquitin ligase complex,
Tissue Specificity	
Function	
Background	This gene encodes a WD repeat-containing protein that interacts with the Cul4-Ddb1 E3 ligase macromolecular complex. Multiple alternatively spliced transcript variants have been found for this gene. [provided by RefSeq, Jul 2009],
matters needing attention	Avoid repeated freezing and thawing!
Usage suggestions	This product can be used in immunological reaction related experiments. For more information, please consult technical personnel.

Nanjing BYabscience technology Co.,Ltd



Products Images



Western blot analysis of lysates from Jarkat cells,
primary antibody was diluted at 1:1000, 4° over night