



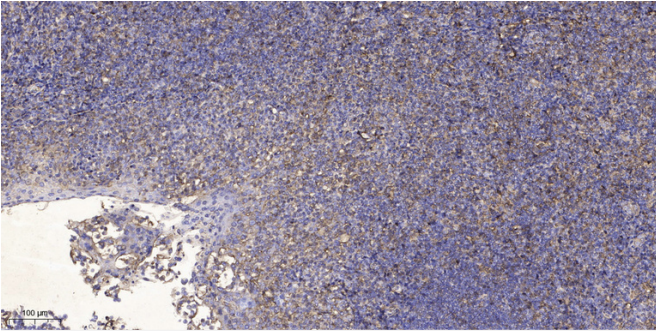
# CQ108 rabbit pAb

Catalog No	BYab-11963
Isotype	IgG
Reactivity	Human; Mouse;Rat
Applications	IHC;IF
Gene Name	C17orf108 HSD24
Protein Name	CQ108
Immunogen	Synthesized peptide derived from human CQ108 AA range: 3-53
Specificity	This antibody detects endogenous levels of CQ108 at Human/Mouse/Rat
Formulation	Liquid in PBS containing 50% glycerol, 0.5% BSA and 0.02% sodium azide.
Source	Polyclonal, Rabbit,IgG
Purification	The antibody was affinity-purified from rabbit serum by affinity-chromatography using specific immunogen.
Dilution	IHC-p 1: 50-200. IF 1:50-200
Concentration	1 mg/ml
Purity	≥90%
Storage Stability	-20°C/1 year
Synonyms	
Observed Band	
Cell Pathway	
Tissue Specificity	
Function	sequence caution:Wrong choice of CDS.,similarity:Belongs to the UPF0631 family.,
Background	
matters needing attention	Avoid repeated freezing and thawing!
Usage suggestions	This product can be used in immunological reaction related experiments. For more information, please consult technical personnel.

Nanjing BYabscience technology Co.,Ltd



## Products Images



Immunohistochemical analysis of paraffin-embedded human tonsil. 1, Antibody was diluted at 1:200(4° overnight). 2, Tris-EDTA,pH9.0 was used for antigen retrieval. 3,Secondary antibody was diluted at 1:200(room temperature, 30min).