



KDEL2 rabbit pAb

Catalog No	BYab-11971
Isotype	IgG
Reactivity	Human;Rat
Applications	WB;ELISA;IHC
Gene Name	KDEL2 UNQ1904/PRO4350
Protein Name	KDEL2
Immunogen	Synthesized peptide derived from human KDEL2 AA range: 414-464
Specificity	This antibody detects endogenous levels of KDEL2 at Human/Rat
Formulation	Liquid in PBS containing 50% glycerol, 0.5% BSA and 0.02% sodium azide.
Source	Polyclonal, Rabbit,IgG
Purification	The antibody was affinity-purified from rabbit serum by affinity-chromatography using specific immunogen.
Dilution	WB 1:500-2000;IHC-p 1:50-300; ELISA 2000-20000
Concentration	1 mg/ml
Purity	≥90%
Storage Stability	-20°C/1 year
Synonyms	
Observed Band	
Cell Pathway	Endoplasmic reticulum lumen .
Tissue Specificity	
Function	similarity:Belongs to the KDELC family.,similarity:Contains 1 filamin repeat.,
Background	
matters needing attention	Avoid repeated freezing and thawing!
Usage suggestions	This product can be used in immunological reaction related experiments. For more information, please consult technical personnel.

Nanjing BYabs science technology Co.,Ltd

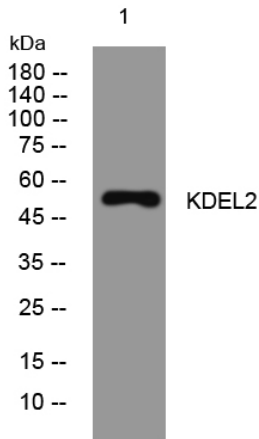
网址: www.njbybio.com

官方热线: 025-5229-8998

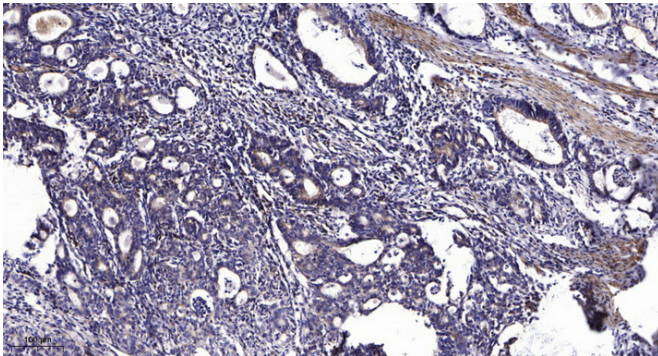
监督电话: 15950492658



Products Images



Western blot analysis of lysates from U2OS cells,
primary antibody was diluted at 1:1000, 4° over night



Immunohistochemical analysis of paraffin-embedded
human Gastric adenocarcinoma. 1, Antibody was
diluted at 1:200(4° overnight). 2, Tris-EDTA,pH9.0 was
used for antigen retrieval. 3,Secondary antibody was
diluted at 1:200(room temperature, 45min).