



MMS19 rabbit pAb

Catalog No	BYab-11990
Isotype	IgG
Reactivity	Human; Mouse
Applications	WB;ELISA;IHC
Gene Name	MMS19 MMS19L
Protein Name	MMS19
Immunogen	Synthesized peptide derived from human MMS19 AA range: 653-703
Specificity	This antibody detects endogenous levels of MMS19 at Human/Mouse
Formulation	Liquid in PBS containing 50% glycerol, 0.5% BSA and 0.02% sodium azide.
Source	Polyclonal, Rabbit,IgG
Purification	The antibody was affinity-purified from rabbit serum by affinity-chromatography using specific immunogen.
Dilution	WB 1:500-2000;IHC-p 1:50-300; ELISA 2000-20000
Concentration	1 mg/ml
Purity	≥90%
Storage Stability	-20°C/1 year
Synonyms	
Observed Band	
Cell Pathway	Nucleus . Cytoplasm, cytoskeleton, spindle . Cytoplasm, cytoskeleton, microtubule organizing center, centrosome . In mitosis, enriched on centrosomes during prophase, localizes to the spindle during metaphase and surrounds compacted spindle midzone microtubules during telophase. .
Tissue Specificity	Ubiquitously expressed with higher expression in testis.
Function	function:May play a role in nucleotide excision repair (NER) and RNA polymerase II (POL II) transcription by interacting with ERCC2/XPD and ERCC3/XPB helicases, both subunits of NER-transcription factor TFIIH. May also function as a transcriptional coactivator of estrogen receptor (ER). May be involved in regulation of ER activity by bridging TFIIH with ER or may facilitate TFIIH-mediated phosphorylation of ER in specific promoters and cell types.,similarity:Belongs to the MET18/MMS19 family.,similarity:Contains 7 HEAT repeats.,subunit:Interacts with ERCC2/XPD, ERCC3/XPB and NCOA3/RAC3.,tissue specificity:Ubiquitously expressed with higher expression in testis.,

Nanjing BYabscience technology Co.,Ltd



Background

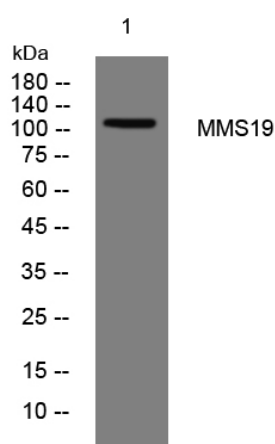
matters needing attention

Avoid repeated freezing and thawing!

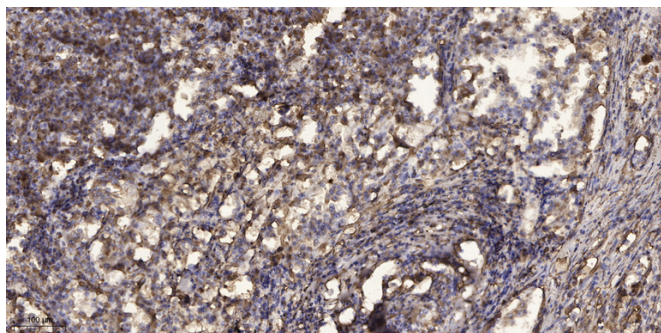
Usage suggestions

This product can be used in immunological reaction related experiments. For more information, please consult technical personnel.

Products Images



Western blot analysis of lysates from HpeG2 cells, primary antibody was diluted at 1:1000, 4° over night



Immunohistochemical analysis of paraffin-embedded human Squamous cell carcinoma of lung. 1, Antibody was diluted at 1:200(4° overnight). 2, Tris-EDTA, pH9.0 was used for antigen retrieval. 3, Secondary antibody was diluted at 1:200(room temperature, 45min).