



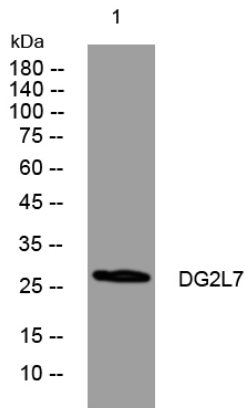
DG2L7 rabbit pAb

Catalog No	BYab-12039
Isotype	IgG
Reactivity	Human;Rat;Mouse;
Applications	WB
Gene Name	DGAT2L7P
Protein Name	DG2L7
Immunogen	Synthesized peptide derived from human DG2L7 AA range: 12-62
Specificity	This antibody detects endogenous levels of DG2L7 at Human
Formulation	Liquid in PBS containing 50% glycerol, 0.5% BSA and 0.02% sodium azide.
Source	Polyclonal, Rabbit,IgG
Purification	The antibody was affinity-purified from rabbit serum by affinity-chromatography using specific immunogen.
Dilution	WB 1: 500-2000
Concentration	1 mg/ml
Purity	≥90%
Storage Stability	-20°C/1 year
Synonyms	
Observed Band	
Cell Pathway	
Tissue Specificity	
Function	function:Probable acyltransferase uses fatty acyl-CoA as substrate.,similarity:Belongs to the diacylglycerol acyltransferase family.,
Background	
matters needing attention	Avoid repeated freezing and thawing!
Usage suggestions	This product can be used in immunological reaction related experiments. For more information, please consult technical personnel.

Nanjing BYabscience technology Co.,Ltd



Products Images



Western blot analysis of lysates from MCF-7 cells,
primary antibody was diluted at 1:1000, 4° over night