



PCD19 rabbit pAb

Catalog No	BYab-12056
Isotype	IgG
Reactivity	Human; Mouse
Applications	WB;IHC
Gene Name	PCDH19 KIAA1313
Protein Name	PCD19
Immunogen	Synthesized peptide derived from human PCD19 AA range: 841-891
Specificity	This antibody detects endogenous levels of PCD19 at Human/Mouse
Formulation	Liquid in PBS containing 50% glycerol, 0.5% BSA and 0.02% sodium azide.
Source	Polyclonal, Rabbit,IgG
Purification	The antibody was affinity-purified from rabbit serum by affinity-chromatography using specific immunogen.
Dilution	WB 1:500-2000;IHC-p 1:50-300
Concentration	1 mg/ml
Purity	≥90%
Storage Stability	-20°C/1 year
Synonyms	
Observed Band	
Cell Pathway	Cell membrane ; Single-pass type I membrane protein .
Tissue Specificity	Moderately expressed in all regions of the brain examined, with lowest levels found in the cerebellum. Moderate expression is also found in ovary, and low expression in all other tissues tested. Also detected in primary skin fibroblast.
Function	developmental stage:Expressed in developing cortical plate, amygdala and subcortical regions and in the ganglionic eminence.,disease:Defects in PCDH19 are the cause of epilepsy, female-restricted, with mental retardation (EFMR) [MIM:300088]; also known as convulsive disorder and mental retardation. EFMR is a condition characterized by seizure onset in infancy or early childhood and cognitive impairment. The disorder is sex-limited, with the phenotype being restricted to females. Males are apparently spared.,function:Potential calcium-dependent cell-adhesion protein.,similarity:Contains 6 cadherin domains.,tissue specificity:Moderately expressed in all regions of the brain examined, with lowest levels found in the cerebellum. Moderate expression is also found in ovary, and low expression in all other tissues tested. Also detected in

Nanjing BYabscience technology Co.,Ltd



primary skin fibroblast.,

Background

The protein encoded by this gene is a member of the delta-2 protocadherin subclass of the cadherin superfamily. The encoded protein is thought to be a calcium-dependent cell-adhesion protein that is primarily expressed in the brain. Defects in this gene are a cause of epilepsy female-restricted with mental retardation (EFMR). Three transcript variants encoding different isoforms have been found for this gene.[provided by RefSeq, May 2010],

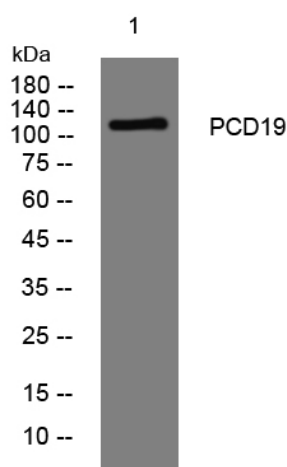
matters needing attention

Avoid repeated freezing and thawing!

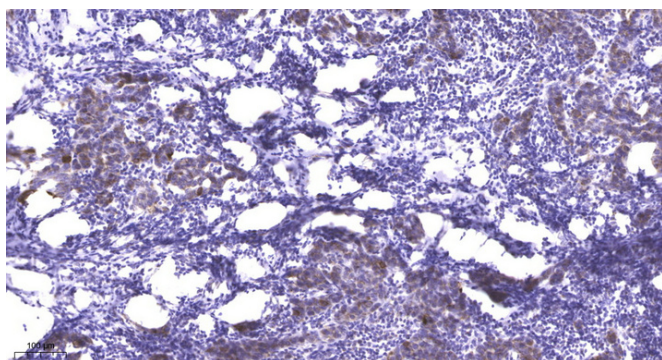
Usage suggestions

This product can be used in immunological reaction related experiments. For more information, please consult technical personnel.

Products Images



Western blot analysis of lysates from HuvEc cells, primary antibody was diluted at 1:1000, 4° over night



Immunohistochemical analysis of paraffin-embedded human Breast cancer. 1, Antibody was diluted at 1:200(4° overnight). 2, Tris-EDTA,pH9.0 was used for antigen retrieval. 3,Secondary antibody was diluted at 1:200(room temperature, 45min).

Nanjing BYabscience technology Co.,Ltd

网址: www.njbybio.com

官方热线: 025-5229-8998

监督电话: 15950492658