



CLCB rabbit pAb

Catalog No	BYab-12076
Isotype	IgG
Reactivity	Human; Mouse;Rat
Applications	WB
Gene Name	CLTB
Protein Name	CLCB
Immunogen	Synthesized peptide derived from human CLCB AA range: 168-218
Specificity	This antibody detects endogenous levels of CLCB at Human/Mouse/Rat
Formulation	Liquid in PBS containing 50% glycerol, 0.5% BSA and 0.02% sodium azide.
Source	Polyclonal, Rabbit,IgG
Purification	The antibody was affinity-purified from rabbit serum by affinity-chromatography using specific immunogen.
Dilution	WB 1: 500-2000
Concentration	1 mg/ml
Purity	≥90%
Storage Stability	-20°C/1 year
Synonyms	
Observed Band	
Cell Pathway	Cytoplasmic vesicle membrane; Peripheral membrane protein; Cytoplasmic side. Membrane, coated pit; Peripheral membrane protein; Cytoplasmic side. Cytoplasmic face of coated pits and vesicles.
Tissue Specificity	
Function	function:Clathrin is the major protein of the polyhedral coat of coated pits and vesicles.,subcellular location:Cytoplasmic face of coated pits and vesicles.,subunit:Clathrin coats are formed from molecules containing 3 heavy chains and 3 light chains. Interacts (via N-terminus) with HIP1. Interacts with HIP1R.,
Background	Clathrin is a large, soluble protein composed of heavy and light chains. It functions as the main structural component of the lattice-type cytoplasmic face of coated pits and vesicles which entrap specific macromolecules during receptor-mediated endocytosis. This gene encodes one of two clathrin light chain proteins which are believed to function as regulatory elements. Alternative splicing results in multiple

Nanjing BYabscience technology Co.,Ltd



transcript variants. [provided by RefSeq, Jul 2008],

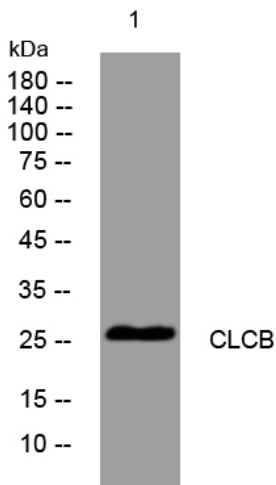
matters needing attention

Avoid repeated freezing and thawing!

Usage suggestions

This product can be used in immunological reaction related experiments. For more information, please consult technical personnel.

Products Images



Western blot analysis of lysates from SW480 cells, primary antibody was diluted at 1:1000, 4° over night