



WFD13 rabbit pAb

Catalog No	BYab-12084
Isotype	IgG
Reactivity	Human; Mouse
Applications	IHC;IF
Gene Name	WFDC13 C20orf138 WAP13
Protein Name	WFD13
Immunogen	Synthesized peptide derived from human WFD13 AA range: 28-78
Specificity	This antibody detects endogenous levels of WFD13 at Human/Mouse
Formulation	Liquid in PBS containing 50% glycerol, 0.5% BSA and 0.02% sodium azide.
Source	Polyclonal, Rabbit,IgG
Purification	The antibody was affinity-purified from rabbit serum by affinity-chromatography using specific immunogen.
Dilution	IHC-p 1: 50-200. IF 1:50-200
Concentration	1 mg/ml
Purity	≥90%
Storage Stability	-20°C/1 year
Synonyms	
Observed Band	
Cell Pathway	Secreted .
Tissue Specificity	
Function	miscellaneous:Although this protein was isolated in a region containing several WAP proteins and was defined as a WAP protein, it does not contain a classical WAP domain.,
Background	This gene encodes a member of the WAP-type four-disulfide core (WFDC) domain family. The WFDC domain, or WAP signature motif, contains eight cysteines forming four disulfide bonds at the core of the protein, and functions as a protease inhibitor. Most WFDC gene members are localized to chromosome 20q12-q13 in two clusters: centromeric and telomeric. This gene belongs to the telomeric cluster. [provided by RefSeq, Jul 2008],

Nanjing BYabscience technology Co.,Ltd



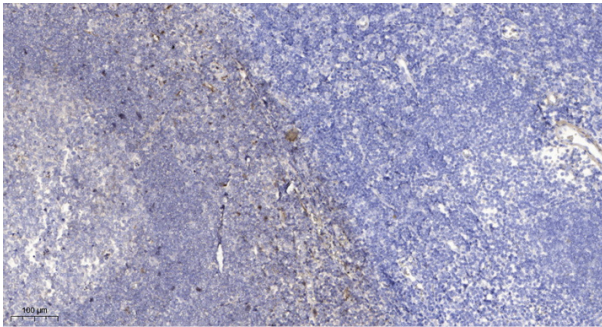
matters needing attention

Avoid repeated freezing and thawing!

Usage suggestions

This product can be used in immunological reaction related experiments. For more information, please consult technical personnel.

Products Images



Immunohistochemical analysis of paraffin-embedded human tonsil. 1, Antibody was diluted at 1:200(4° overnight). 2, Tris-EDTA,pH9.0 was used for antigen retrieval. 3,Secondary antibody was diluted at 1:200(room temperature, 30min).