



# SAP18 rabbit pAb

Catalog No	BYab-12147
Isotype	IgG
Reactivity	Human; Mouse
Applications	WB;IHC
Gene Name	SAP18 GIG38
Protein Name	SAP18
Immunogen	Synthesized peptide derived from human SAP18
Specificity	This antibody detects endogenous levels of SAP18 at Human/Mouse
Formulation	Liquid in PBS containing 50% glycerol, 0.5% BSA and 0.02% sodium azide.
Source	Polyclonal, Rabbit,IgG
Purification	The antibody was affinity-purified from rabbit serum by affinity-chromatography using specific immunogen.
Dilution	WB 1:500-2000;IHC-p 1:50-300
Concentration	1 mg/ml
Purity	≥90%
Storage Stability	-20°C/1 year
Synonyms	
Observed Band	
Cell Pathway	Nucleus . Cytoplasm . Nucleus speckle . Shuttles between the nucleus and the cytoplasm (PubMed:16314458). Colocalizes with ACIN1 and SRSF2 in nuclear speckles (PubMed:20966198). .
Tissue Specificity	Ubiquitous.
Function	function:Component of the SIN3-repressing complex. Enhances the ability of SIN3-HDAC1-mediated transcriptional repression. When tethered to the promoter, it can direct the formation of a repressive complex to core histone proteins.,similarity:Belongs to the SAP18 family.,subunit:Forms a complex with SIN3A and HDAC1.,tissue specificity:Ubiquitous.,
Background	Histone acetylation plays a key role in the regulation of eukaryotic gene expression. Histone acetylation and deacetylation are catalyzed by multisubunit complexes. The protein encoded by this gene is a component of the histone deacetylase complex, which includes SIN3, SAP30, HDAC1, HDAC2, RbAp46, RbAp48, and other polypeptides. This protein directly interacts with SIN3 and

Nanjing BYabs science technology Co.,Ltd



enhances SIN3-mediated transcriptional repression when tethered to the promoter. A pseudogene has been identified on chromosome 2. [provided by RefSeq, Dec 2008],

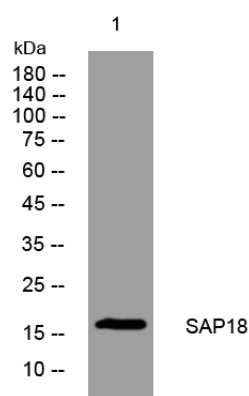
#### matters needing attention

Avoid repeated freezing and thawing!

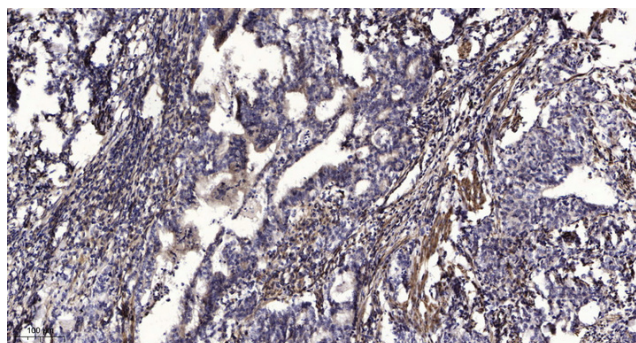
#### Usage suggestions

This product can be used in immunological reaction related experiments. For more information, please consult technical personnel.

## Products Images



Western blot analysis of lysates from MCF-7 cells, primary antibody was diluted at 1:1000, 4° over night



Immunohistochemical analysis of paraffin-embedded human Gastric adenocarcinoma. 1, Antibody was diluted at 1:200(4° overnight). 2, Tris-EDTA, pH9.0 was used for antigen retrieval. 3, Secondary antibody was diluted at 1:200(room temperature, 45min).