



# AP3M2 rabbit pAb

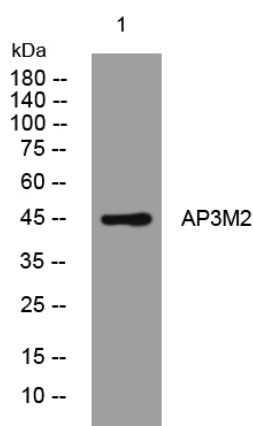
<b>Catalog No</b>	BYab-12148
<b>Isotype</b>	IgG
<b>Reactivity</b>	Human; Mouse; Rat
<b>Applications</b>	WB
<b>Gene Name</b>	AP3M2
<b>Protein Name</b>	AP3M2
<b>Immunogen</b>	Synthesized peptide derived from human AP3M2 AA range: 274-324
<b>Specificity</b>	This antibody detects endogenous levels of AP3M2 at Human/Mouse/Rat
<b>Formulation</b>	Liquid in PBS containing 50% glycerol, 0.5% BSA and 0.02% sodium azide.
<b>Source</b>	Polyclonal, Rabbit, IgG
<b>Purification</b>	The antibody was affinity-purified from rabbit serum by affinity-chromatography using specific immunogen.
<b>Dilution</b>	WB 1: 500-2000
<b>Concentration</b>	1 mg/ml
<b>Purity</b>	≥90%
<b>Storage Stability</b>	-20°C/1 year
<b>Synonyms</b>	
<b>Observed Band</b>	
<b>Cell Pathway</b>	Golgi apparatus. Cytoplasmic vesicle membrane ; Peripheral membrane protein ; Cytoplasmic side . Component of the coat surrounding the cytoplasmic face of coated vesicles located at the Golgi complex. .
<b>Tissue Specificity</b>	
<b>Function</b>	function: Part of the AP-3 complex, an adaptor-related complex which is not clathrin-associated. The complex is associated with the Golgi region as well as more peripheral structures. It facilitates the budding of vesicles from the Golgi membrane and may be directly involved in trafficking to lysosomes. , similarity: Belongs to the adaptor complexes medium subunit family. , similarity: Contains 1 MHD (mu homology) domain. , subunit: Adaptor protein complex 3 (AP-3) is an heterotetramer composed of two large adaptins (delta-type subunit AP3D1 and beta-type subunit AP3B1 or AP3B2), a medium adaptin (mu-type subunit AP3M1 or AP3M2) and a small adaptin (sigma-type subunit APS1 or AP3S2). ,

**Nanjing BYabs science technology Co., Ltd**



<b>Background</b>	This gene encodes a subunit of the heterotetrameric adaptor-related protein complex 3 (AP-3), which belongs to the adaptor complexes medium subunits family. The AP-3 complex plays a role in protein trafficking to lysosomes and specialized organelles. Multiple alternatively spliced variants, encoding the same protein, have been identified. [provided by RefSeq, Aug 2008],
<b>matters needing attention</b>	Avoid repeated freezing and thawing!
<b>Usage suggestions</b>	This product can be used in immunological reaction related experiments. For more information, please consult technical personnel.

## Products Images



Western blot analysis of lysates from MCF-7 cells, primary antibody was diluted at 1:1000, 4° over night