



DOC2B rabbit pAb

Catalog No	BYab-12236
Isotype	IgG
Reactivity	Human; Mouse;Rat
Applications	WB
Gene Name	DOC2B DOC2BL
Protein Name	DOC2B
Immunogen	Synthesized peptide derived from human DOC2B AA range: 332-382
Specificity	This antibody detects endogenous levels of DOC2B at Human/Mouse/Rat
Formulation	Liquid in PBS containing 50% glycerol, 0.5% BSA and 0.02% sodium azide.
Source	Polyclonal, Rabbit,IgG
Purification	The antibody was affinity-purified from rabbit serum by affinity-chromatography using specific immunogen.
Dilution	WB 1: 500-2000
Concentration	1 mg/ml
Purity	≥90%
Storage Stability	-20°C/1 year
Synonyms	
Observed Band	
Cell Pathway	Cytoplasm. Cytoplasmic granule . Cell membrane ; Peripheral membrane protein . Translocates to the plasma membrane in a calcium-dependent manner. .
Tissue Specificity	Widely expressed with highest levels in brain and kidney. Expressed in pancreatic islet cells (at protein level).
Function	domain:C2 domain 1 is involved in binding calcium and phospholipids.,function:May be involved in constitutive membrane trafficking including dynein-dependent intracellular vesicle transport. In vitro, binds calcium and phospholipids.,similarity:Contains 2 C2 domains.,subunit:Interacts with cytoplasmic dynein light chain TCTEL1/TCTEX1.,tissue specificity:Widely expressed with highest levels in brain and kidney.,
Background	There are at least two protein isoforms of the Double C2 protein, namely alpha (DOC2A) and beta (DOC2B), which contain two C2-like domains. DOC2A and DOC2B are encoded by different genes; these genes are at times confused with the unrelated DAB2 gene which was initially named DOC-2. DOC2B is expressed ubiquitously and is suggested to be involved in Ca(2+)-dependent intracellular

Nanjing BYabscience technology Co.,Ltd



vesicle trafficking in various types of cells. [provided by RefSeq, Jul 2008],

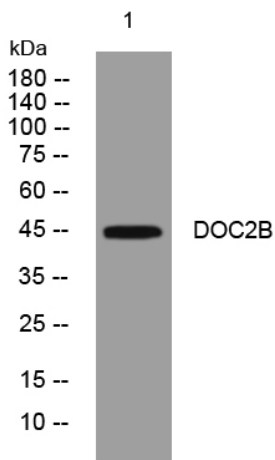
matters needing attention

Avoid repeated freezing and thawing!

Usage suggestions

This product can be used in immunological reaction related experiments. For more information, please consult technical personnel.

Products Images



Western blot analysis of lysates from VEC cells,
primary antibody was diluted at 1:1000, 4°over night