



# KNTC1 rabbit pAb

<b>Catalog No</b>	BYab-12264
<b>Isotype</b>	IgG
<b>Reactivity</b>	Human; Mouse
<b>Applications</b>	WB;ELISA;IHC
<b>Gene Name</b>	KNTC1 KIAA0166
<b>Protein Name</b>	KNTC1
<b>Immunogen</b>	Synthesized peptide derived from human KNTC1 AA range: 1343-1393
<b>Specificity</b>	This antibody detects endogenous levels of KNTC1 at Human/Mouse
<b>Formulation</b>	Liquid in PBS containing 50% glycerol, 0.5% BSA and 0.02% sodium azide.
<b>Source</b>	Polyclonal, Rabbit,IgG
<b>Purification</b>	The antibody was affinity-purified from rabbit serum by affinity-chromatography using specific immunogen.
<b>Dilution</b>	WB 1:500-2000;IHC-p 1:50-300; ELISA 2000-20000
<b>Concentration</b>	1 mg/ml
<b>Purity</b>	≥90%
<b>Storage Stability</b>	-20°C/1 year
<b>Synonyms</b>	
<b>Observed Band</b>	
<b>Cell Pathway</b>	Cytoplasm. Nucleus. Chromosome, centromere, kinetochore. Cytoplasm, cytoskeleton, spindle. Dynamic pattern of localization during the cell cycle. At interphase, uniformly distributed throughout the cytoplasm and nucleus. By prophase and until late stages of prometaphase, a fraction of the total pool is concentrated at kinetochores. By metaphase, detected at kinetochores, along spindle fibers and most prominently at the poles. By late anaphase until the end of telophase, no longer detectable on kinetochores or along spindle fibers, but still present at the spindle poles.
<b>Tissue Specificity</b>	High expression in testis.
<b>Function</b>	function:Essential component of the mitotic checkpoint, which prevents cells from prematurely exiting mitosis. Required for the assembly of the dynein-dynactin and MAD1-MAD2 complexes onto kinetochores.,subcellular location:Dynamic pattern of localization during the cell cycle. At interphase, uniformly distributed throughout the cytoplasm and nucleus. By prophase and until late stages of prometaphase, a fraction of the total pool is concentrated at kinetochores. By metaphase, detected

**Nanjing BYabs science technology Co.,Ltd**



at kinetochores, along spindle fibers and most prominently at the poles. By late anaphase until the end of telophase, no longer detectable on kinetochores or along spindle fibers, but still present at the spindle poles.,subunit:Interacts with ZW10. This interaction is required for stable association with the kinetochore. Component of the RZZ complex composed of KNTC1/ROD, ZW10 and ZWILCH.,tissue specificity

#### Background

This gene encodes a protein that is one of many involved in mechanisms to ensure proper chromosome segregation during cell division. Experimental evidence indicated that the encoded protein functioned in a similar manner to that of the Drosophila rough deal protein. [provided by RefSeq, Jul 2008],

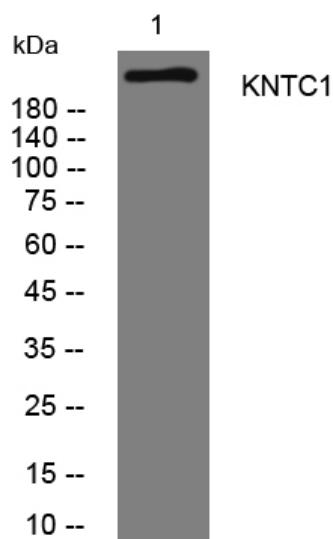
#### matters needing attention

Avoid repeated freezing and thawing!

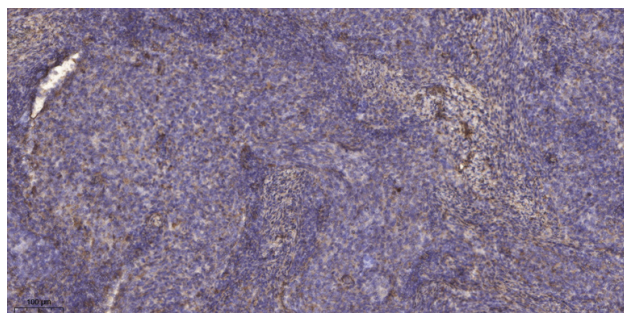
#### Usage suggestions

This product can be used in immunological reaction related experiments. For more information, please consult technical personnel.

### Products Images



Western blot analysis of lysates from MCF-7 cells, primary antibody was diluted at 1:1000, 4° over night



Immunohistochemical analysis of paraffin-embedded human cervical carcinoma. 1, Antibody was diluted at 1:200(4° overnight). 2, Tris-EDTA,pH9.0 was used for antigen retrieval. 3,Secondary antibody was diluted at 1:200(room temperature, 45min).

**Nanjing BYabscience technology Co.,Ltd**

网址: [www.njbybio.com](http://www.njbybio.com)

官方热线: 025-5229-8998

监督电话: 15950492658