



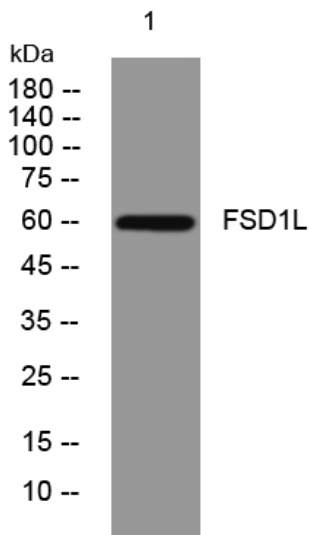
FSD1L rabbit pAb

Catalog No	BYab-12278
Isotype	IgG
Reactivity	Human; Mouse
Applications	WB
Gene Name	FSD1L CCDC10 CSDUFD1 FSD1CL FSD1NL
Protein Name	FSD1L
Immunogen	Synthesized peptide derived from human FSD1L AA range: 10-60
Specificity	This antibody detects endogenous levels of FSD1L at Human/Mouse
Formulation	Liquid in PBS containing 50% glycerol, 0.5% BSA and 0.02% sodium azide.
Source	Polyclonal, Rabbit,IgG
Purification	The antibody was affinity-purified from rabbit serum by affinity-chromatography using specific immunogen.
Dilution	WB 1: 500-2000
Concentration	1 mg/ml
Purity	≥90%
Storage Stability	-20°C/1 year
Synonyms	
Observed Band	
Cell Pathway	intracellular,integral component of membrane,
Tissue Specificity	
Function	similarity:Contains 1 B30.2/SPRY domain.,
Background	
matters needing attention	Avoid repeated freezing and thawing!
Usage suggestions	This product can be used in immunological reaction related experiments. For more information, please consult technical personnel.

Nanjing BYabscience technology Co.,Ltd



Products Images



Western blot analysis of lysates from PC-12 cells,
primary antibody was diluted at 1:1000, 4° over night