



# LEO1 rabbit pAb

<b>Catalog No</b>	BYab-12323
<b>Isotype</b>	IgG
<b>Reactivity</b>	Human; Mouse;Rat
<b>Applications</b>	WB;ELISA;IHC
<b>Gene Name</b>	LEO1 RDL
<b>Protein Name</b>	LEO1
<b>Immunogen</b>	Synthesized peptide derived from human LEO1 AA range: 159-209
<b>Specificity</b>	This antibody detects endogenous levels of LEO1 at Human/Mouse/Rat
<b>Formulation</b>	Liquid in PBS containing 50% glycerol, 0.5% BSA and 0.02% sodium azide.
<b>Source</b>	Polyclonal, Rabbit,IgG
<b>Purification</b>	The antibody was affinity-purified from rabbit serum by affinity-chromatography using specific immunogen.
<b>Dilution</b>	WB 1:500-2000;IHC-p 1:50-300; ELISA 2000-20000
<b>Concentration</b>	1 mg/ml
<b>Purity</b>	≥90%
<b>Storage Stability</b>	-20°C/1 year
<b>Synonyms</b>	
<b>Observed Band</b>	
<b>Cell Pathway</b>	Nucleus .
<b>Tissue Specificity</b>	Highly expressed in skeletal muscle and heart. Weakly expressed in placenta and liver.
<b>Function</b>	function:The PAF1 complex is a multifunctional complex. The PAF1 complex interacts with POLR2A. May be involved in both initiation and elongation, histone methylation and RNA processing. Overexpression of LEO1 induces cell growth arrest and premature senescence of fibroblasts.,similarity:Belongs to the LEO1 family.,subunit:Component of the PAF1 complex, which consists of at least of CDC73, PAF1, LEO1 and CTR9. Interacts with CDC73.,tissue specificity:Highly expressed in skeletal muscle and heart. Weakly expressed in placenta and liver.,
<b>Background</b>	LEO1, parafibromin (CDC73; MIM 607393), CTR9 (MIM 609366), and PAF1 (MIM 610506) form the PAF protein complex that associates with the RNA polymerase II subunit POLR2A (MIM 180660) and with a histone methyltransferase complex (Rozenblatt-Rosen et al., 2005 [PubMed 15632063]).[supplied by OMIM, Mar

**Nanjing BYabscience technology Co.,Ltd**



2008],

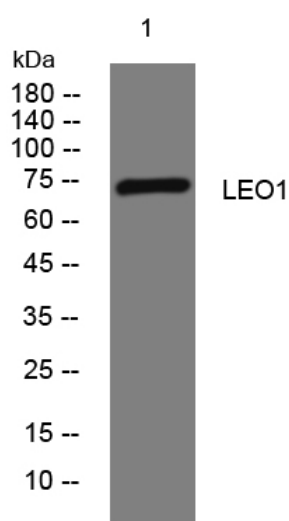
**matters needing attention**

Avoid repeated freezing and thawing!

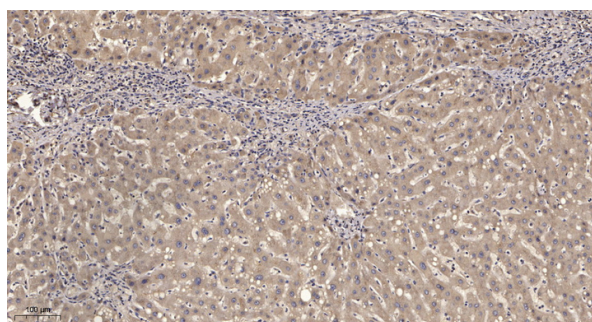
**Usage suggestions**

This product can be used in immunological reaction related experiments. For more information, please consult technical personnel.

## Products Images



Western blot analysis of lysates from U2OS cells, primary antibody was diluted at 1:1000, 4° over night



Immunohistochemical analysis of paraffin-embedded human liver cancer. 1, Antibody was diluted at 1:200(4° overnight). 2, Tris-EDTA, pH9.0 was used for antigen retrieval. 3, Secondary antibody was diluted at 1:200(room temperature, 45min).

**Nanjing BYabs science technology Co.,Ltd**

网址: [www.njbybio.com](http://www.njbybio.com)

官方热线: 025-5229-8998

监督电话: 15950492658