



# SYFM rabbit pAb

<b>Catalog No</b>	BYab-12343
<b>Isotype</b>	IgG
<b>Reactivity</b>	Human; Mouse;Rat
<b>Applications</b>	WB;ELISA;IHC
<b>Gene Name</b>	FARS2 FARS1 HSPC320
<b>Protein Name</b>	SYFM
<b>Immunogen</b>	Synthesized peptide derived from human SYFM AA range: 294-344
<b>Specificity</b>	This antibody detects endogenous levels of SYFM at Human/Mouse/Rat
<b>Formulation</b>	Liquid in PBS containing 50% glycerol, 0.5% BSA and 0.02% sodium azide.
<b>Source</b>	Polyclonal, Rabbit,IgG
<b>Purification</b>	The antibody was affinity-purified from rabbit serum by affinity-chromatography using specific immunogen.
<b>Dilution</b>	WB 1:500-2000;IHC-p 1:50-300; ELISA 2000-20000
<b>Concentration</b>	1 mg/ml
<b>Purity</b>	≥90%
<b>Storage Stability</b>	-20°C/1 year
<b>Synonyms</b>	
<b>Observed Band</b>	
<b>Cell Pathway</b>	Mitochondrion matrix . Mitochondrion .
<b>Tissue Specificity</b>	
<b>Function</b>	catalytic activity:ATP + L-phenylalanine + tRNA(Phe) = AMP + diphosphate + L-phenylalanyl-tRNA(Phe).,similarity:Belongs to the class-II aminoacyl-tRNA synthetase family.,similarity:Contains 1 FDX-ACB domain.,subunit:Monomer.,
<b>Background</b>	This gene encodes a protein that transfers phenylalanine to its cognate tRNA. This protein localizes to the mitochondrion and plays a role in mitochondrial protein translation. Mutations in this gene can cause combined oxidative phosphorylation deficiency 14 (Alpers encephalopathy). Alternative splicing results in multiple transcript variants. [provided by RefSeq, Jan 2016],
<b>matters needing attention</b>	Avoid repeated freezing and thawing!

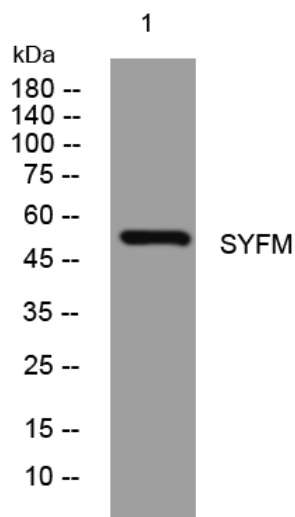
**Nanjing BYabscience technology Co.,Ltd**



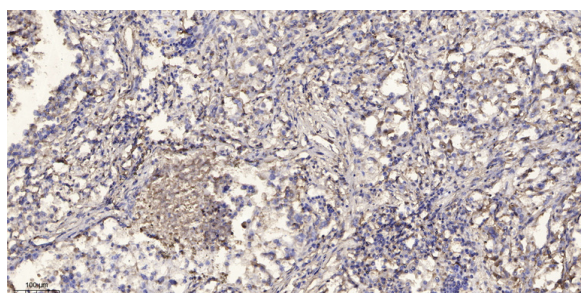
## Usage suggestions

This product can be used in immunological reaction related experiments. For more information, please consult technical personnel.

## Products Images



Western blot analysis of lysates from HeLa cells, primary antibody was diluted at 1:1000, 4° over night



Immunohistochemical analysis of paraffin-embedded human Squamous cell carcinoma of lung. 1, Antibody was diluted at 1:200(4° overnight). 2, Tris-EDTA, pH9.0 was used for antigen retrieval. 3, Secondary antibody was diluted at 1:200(room temperature, 45min).

**Nanjing BYabs science technology Co.,Ltd**

网址: [www.njbybio.com](http://www.njbybio.com)

官方热线: 025-5229-8998

监督电话: 15950492658