



STAR5 rabbit pAb

Catalog No	BYab-12360
Isotype	IgG
Reactivity	Human; Mouse
Applications	WB;ELISA;IHC
Gene Name	STARD5
Protein Name	STAR5
Immunogen	Synthesized peptide derived from human STAR5 AA range: 129-179
Specificity	This antibody detects endogenous levels of STAR5 at Human/Mouse
Formulation	Liquid in PBS containing 50% glycerol, 0.5% BSA and 0.02% sodium azide.
Source	Polyclonal, Rabbit,IgG
Purification	The antibody was affinity-purified from rabbit serum by affinity-chromatography using specific immunogen.
Dilution	WB 1:500-2000;IHC-p 1:50-300; ELISA 2000-20000
Concentration	1 mg/ml
Purity	≥90%
Storage Stability	-20°C/1 year
Synonyms	
Observed Band	
Cell Pathway	mitochondrion,cytosol,
Tissue Specificity	
Function	function:May be involved in the intracellular transport of sterols or other lipids. May bind cholesterol or other sterols.,similarity:Contains 1 START domain.,
Background	Proteins containing a steroidogenic acute regulatory-related lipid transfer (START) domain are often involved in the trafficking of lipids and cholesterol between diverse intracellular membranes. This gene is a member of the StarD subfamily that encodes START-related lipid transfer proteins. The protein encoded by this gene is a cholesterol transporter and is also able to bind and transport other sterol-derived molecules related to the cholesterol/bile acid biosynthetic pathways such as 25-hydroxycholesterol. Its expression is upregulated during endoplasmic reticulum (ER) stress. The protein is thought to act as a cytosolic sterol transporter that moves cholesterol between intracellular

Nanjing BYabscience technology Co.,Ltd



membranes such as from the cytoplasm to the ER and from the ER to the Golgi apparatus. Alternative splicing of this gene produces multiple transcript variants. [provided by RefSeq, Jan 2016],

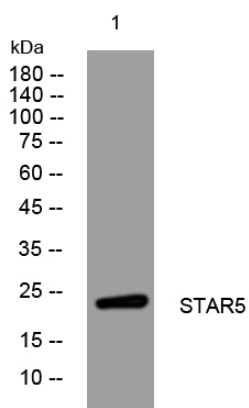
matters needing attention

Avoid repeated freezing and thawing!

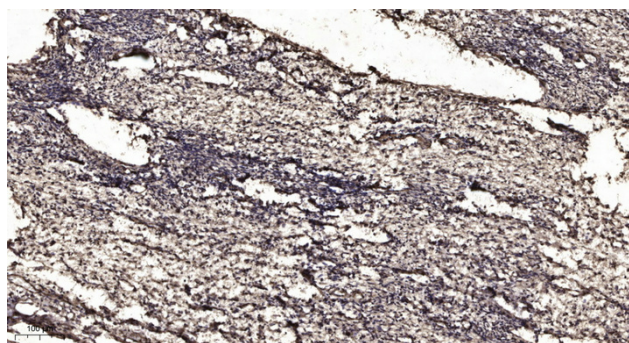
Usage suggestions

This product can be used in immunological reaction related experiments. For more information, please consult technical personnel.

Products Images



Western blot analysis of lysates from U2OS cells, primary antibody was diluted at 1:1000, 4° over night



Immunohistochemical analysis of paraffin-embedded human oophoroma. 1, Antibody was diluted at 1:200(4° overnight). 2, Tris-EDTA, pH9.0 was used for antigen retrieval. 3, Secondary antibody was diluted at 1:200(room temperature, 45min).

Nanjing BYabs science technology Co.,Ltd

网址: www.njbybio.com

官方热线: 025-5229-8998

监督电话: 15950492658