



CREB5 rabbit pAb

Catalog No	BYab-12381
Isotype	IgG
Reactivity	Human; Mouse
Applications	WB
Gene Name	CREB5 CREBPA
Protein Name	CREB5
Immunogen	Synthesized peptide derived from human CREB5 AA range: 415-465
Specificity	This antibody detects endogenous levels of CREB5 at Human/Mouse
Formulation	Liquid in PBS containing 50% glycerol, 0.5% BSA and 0.02% sodium azide.
Source	Polyclonal, Rabbit,IgG
Purification	The antibody was affinity-purified from rabbit serum by affinity-chromatography using specific immunogen.
Dilution	WB 1: 500-2000
Concentration	1 mg/ml
Purity	≥90%
Storage Stability	-20°C/1 year
Synonyms	
Observed Band	
Cell Pathway	Nucleus .
Tissue Specificity	
Function	function: Binds to the cAMP response element and activates transcription., similarity: Belongs to the bZIP family., similarity: Contains 1 bZIP domain., similarity: Contains 1 C2H2-type zinc finger., subunit: Binds DNA as a homodimer or as a heterodimer with JUN or ATF2/CREBP1.,
Background	The product of this gene belongs to the CRE (cAMP response element)-binding protein family. Members of this family contain zinc-finger and bZIP DNA-binding domains. The encoded protein specifically binds to CRE as a homodimer or a heterodimer with c-Jun or CRE-BP1, and functions as a CRE-dependent trans-activator. Alternatively spliced transcript variants encoding different isoforms have been identified. [provided by RefSeq, Jul 2008],

Nanjing BYabscience technology Co.,Ltd



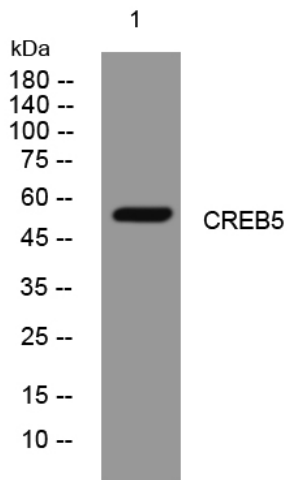
matters needing attention

Avoid repeated freezing and thawing!

Usage suggestions

This product can be used in immunological reaction related experiments. For more information, please consult technical personnel.

Products Images



Western blot analysis of lysates from VEC cells,
primary antibody was diluted at 1:1000, 4° over night