



GDPD1 rabbit pAb

Catalog No	BYab-12404
Isotype	IgG
Reactivity	Human; Mouse;Rat
Applications	WB
Gene Name	GDPD1 GDE4
Protein Name	GDPD1
Immunogen	Synthesized peptide derived from human GDPD1 AA range: 247-297
Specificity	This antibody detects endogenous levels of GDPD1 at Human/Mouse/Rat
Formulation	Liquid in PBS containing 50% glycerol, 0.5% BSA and 0.02% sodium azide.
Source	Polyclonal, Rabbit,IgG
Purification	The antibody was affinity-purified from rabbit serum by affinity-chromatography using specific immunogen.
Dilution	WB 1: 500-2000
Concentration	1 mg/ml
Purity	≥90%
Storage Stability	-20°C/1 year
Synonyms	
Observed Band	
Cell Pathway	Cytoplasm . Membrane ; Multi-pass membrane protein . Cytoplasm, perinuclear region . Endoplasmic reticulum . Concentrated at the perinuclear region and the cell periphery (PubMed:18991142). .
Tissue Specificity	Widely expressed with high expression level in testis.
Function	similarity:Belongs to the glycerophosphoryl diester phosphodiesterase family.,similarity:Contains 1 GDPD domain.,tissue specificity:Detected in placenta, liver, kidney, pancreas, spleen, thymus, ovary, small intestine and peripheral blood leukocytes.,
Background	This gene encodes a member of the glycerophosphodiester phosphodiesterase family of enzymes that catalyze the hydrolysis of deacylated glycerophospholipids to glycerol phosphate and alcohol. The encoded protein is localized to the cytoplasm and concentrates near the perinuclear region. Alternative splicing results in multiple transcript variants. [provided by RefSeq, Oct 2009],

Nanjing BYabscience technology Co.,Ltd



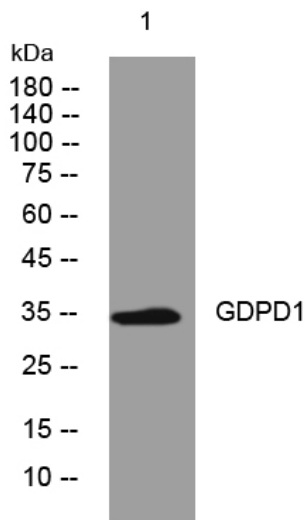
matters needing attention

Avoid repeated freezing and thawing!

Usage suggestions

This product can be used in immunological reaction related experiments. For more information, please consult technical personnel.

Products Images



Western blot analysis of lysates from VEC cells, primary antibody was diluted at 1:1000, 4° over night