



RFA1 rabbit pAb

Catalog No	BYab-12518
Isotype	IgG
Reactivity	Human;Monkey;Mouse;Rat
Applications	WB;ELISA;IHC
Gene Name	RPA1 REPA1 RPA70
Protein Name	RFA1
Immunogen	Synthesized peptide derived from human RFA1
Specificity	This antibody detects endogenous levels of Human,Monkey,Mouse,Rat RFA1
Formulation	Liquid in PBS containing 50% glycerol, 0.5% BSA and 0.02% sodium azide.
Source	Polyclonal, Rabbit,IgG
Purification	The antibody was affinity-purified from rabbit serum by affinity-chromatography using specific immunogen.
Dilution	WB 1:500-2000;IHC-p 1:50-300; ELISA 2000-20000
Concentration	1 mg/ml
Purity	≥90%
Storage Stability	-20°C/1 year
Synonyms	Replication protein A 70 kDa DNA-binding subunit (RP-A p70;Replication factor A protein 1;RF-A protein 1;Single-stranded DNA-binding protein)
Observed Band	
Cell Pathway	Nucleus . Nucleus, PML body . Enriched in PML bodies in cells displaying alternative lengthening of their telomeres. .
Tissue Specificity	
Function	function:It participates in a very early step in initiation. RP-A is a single-stranded DNA-binding protein. Absolutely required for simian virus 40 DNA replication in vitro.,PTM:Phosphorylated upon DNA damage, probably by ATM or ATR.,similarity:Belongs to the replication factor A protein 1 family.,subunit:Heterotrimer of 70, 32 and 14 kDa chains. The DNA-binding activity may reside exclusively on the 70 kDa subunit. Interacts with RIP and XPA. Interacts with RPA4.,
Background	function:It participates in a very early step in initiation. RP-A is a single-stranded DNA-binding protein. Absolutely required for simian virus 40 DNA replication in vitro.,PTM:Phosphorylated upon DNA damage, probably by ATM or

Nanjing BYabscience technology Co.,Ltd



ATR.,similarity:Belongs to the replication factor A protein 1 family.,subunit:Heterotrimer of 70, 32 and 14 kDa chains. The DNA-binding activity may reside exclusively on the 70 kDa subunit. Interacts with RIP and XPA. Interacts with RPA4.,

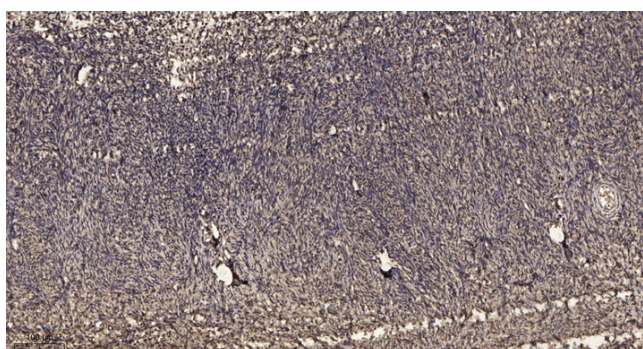
matters needing attention

Avoid repeated freezing and thawing!

Usage suggestions

This product can be used in immunological reaction related experiments. For more information, please consult technical personnel.

Products Images



Immunohistochemical analysis of paraffin-embedded human oophoroma. 1, Antibody was diluted at 1:200(4° overnight). 2, Tris-EDTA,pH9.0 was used for antigen retrieval. 3,Secondary antibody was diluted at 1:200(room temperature, 45min).