



SIAT6 rabbit pAb

Catalog No	BYab-12519
Isotype	IgG
Reactivity	Human;Mouse;Rat
Applications	WB;ELISA;IHC
Gene Name	ST3GAL3 SIAT6
Protein Name	SIAT6
Immunogen	Synthesized peptide derived from human SIAT6
Specificity	This antibody detects endogenous levels of Human,Mouse,Rat SIAT6
Formulation	Liquid in PBS containing 50% glycerol, 0.5% BSA and 0.02% sodium azide.
Source	Polyclonal, Rabbit,IgG
Purification	The antibody was affinity-purified from rabbit serum by affinity-chromatography using specific immunogen.
Dilution	WB 1:500-2000;IHC-p 1:50-300; ELISA 2000-20000
Concentration	1 mg/ml
Purity	≥90%
Storage Stability	-20°C/1 year
Synonyms	CMP-N-acetylneuraminate-beta-1,4-galactoside alpha-2,3-sialyltransferase (EC 2.4.99.6;Beta-galactoside alpha-2,3-sialyltransferase 3;Alpha 2,3-ST 3;Gal beta-1,3(4) GlcNAc alpha-2,3 sialyltransferase;N-acetylactosaminide alpha-2,3-sialyltransferase;ST3Gal III;ST3GalIII;ST3N;Sialyltransferase 6)
Observed Band	
Cell Pathway	Golgi apparatus, Golgi stack membrane; Single-pass type II membrane protein. Secreted. Membrane-bound form in trans cisternae of Golgi. Secreted into the body fluid.
Tissue Specificity	Highly expressed in adult skeletal muscle and in all fetal tissues examined and to a much lesser extent in placenta, lung and liver.
Function	
Background	

Nanjing BYabscience technology Co.,Ltd



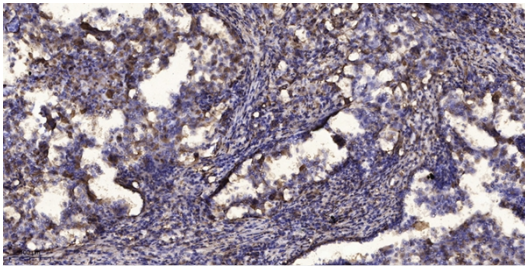
matters needing attention

Avoid repeated freezing and thawing!

Usage suggestions

This product can be used in immunological reaction related experiments. For more information, please consult technical personnel.

Products Images



Immunohistochemical analysis of paraffin-embedded human Squamous cell carcinoma of lung. 1, Antibody was diluted at 1:200(4° overnight). 2, Tris-EDTA,pH9.0 was used for antigen retrieval. 3,Secondary antibody was diluted at 1:200(room temperature, 45min).