



KLHL12 Monoclonal Antibody

| | |
|---------------------------|---|
| Catalog No | BYab-12607 |
| Isotype | IgG |
| Reactivity | Human |
| Applications | WB;ELISA |
| Gene Name | KLHL12 |
| Protein Name | Kelch-like protein 12 |
| Immunogen | Purified recombinant fragment of human KLHL12 expressed in E. Coli. |
| Specificity | KLHL12 Monoclonal Antibody detects endogenous levels of KLHL12 protein. |
| Formulation | Ascitic fluid containing 0.03% sodium azide,0.5% BSA, 50%glycerol. |
| Source | Monoclonal, Mouse |
| Purification | Affinity purification |
| Dilution | Western Blot: 1/500 - 1/2000. ELISA: 1/10000. Not yet tested in other applications. |
| Concentration | 1 mg/ml |
| Purity | ≥90% |
| Storage Stability | -20°C/1 year |
| Synonyms | KLHL12; C3IP1; Kelch-like protein 12; CUL3-interacting protein 1; DKIR homolog; hDKIR |
| Observed Band | |
| Cell Pathway | Cytoplasmic vesicle, COPII-coated vesicle . |
| Tissue Specificity | Ubiquitously expressed. Highly expressed in testis and at lower levels in the submandibular salivary gland. |
| Function | domain:The BTB domain is required for interaction with CUL3.,function:Serves as a substrate-specific adapter for the CUL3-based ubiquitin-protein E3 ligase complex. Negatively regulates the Wnt signaling pathway via the targeted ubiquitination and subsequent proteolysis of DVL3.,similarity:Contains 1 BTB (POZ) domain.,similarity:Contains 6 Kelch repeats.,subunit:Component of an ubiquitin-protein E3 ligase complex which includes at least CUL3 and KLHL12. This complex interacts with DVL3 upon activation of the Wnt signaling pathway by WNT3A.,tissue specificity:Highly expressed in testis and at lower levels in the submandibular salivary gland., |
| Background | This gene encodes a member of the KLHL (Kelch-like) family of proteins. This protein has been identified as an autoantigen in the autoimmune disease |

Nanjing BYabscience technology Co.,Ltd



Sjogren's syndrome and as a potential biomarker in primary biliary cirrhosis. This protein may act as a substrate adaptor of the Cullin-3 ubiquitin ligase complex to promote substrate-specific ubiquitylation. Ubiquitylation by this complex has been shown to regulate the Wnt signaling pathway as well as COPII vesicle coat size. A pseudogene has been identified on chromosome 22. Alternative splicing results in multiple transcript variants. [provided by RefSeq, Dec 2014],

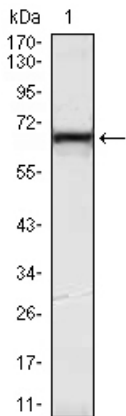
matters needing attention

Avoid repeated freezing and thawing!

Usage suggestions

This product can be used in immunological reaction related experiments. For more information, please consult technical personnel.

Products Images



Western Blot analysis using KLHL12 Monoclonal Antibody against HeLa (1) cell lysate.