



ALS2CR7 Polyclonal Antibody

Catalog No	BYab-12682
Isotype	IgG
Reactivity	Human;Mouse
Applications	WB;IHC;IF;ELISA
Gene Name	CDK15
Protein Name	Cyclin-dependent kinase 15
Immunogen	The antiserum was produced against synthesized peptide derived from human ALS2CR7. AA range:261-310
Specificity	ALS2CR7 Polyclonal Antibody detects endogenous levels of ALS2CR7 protein.
Formulation	Liquid in PBS containing 50% glycerol, 0.5% BSA and 0.02% sodium azide.
Source	Polyclonal, Rabbit,IgG
Purification	The antibody was affinity-purified from rabbit antiserum by affinity-chromatography using epitope-specific immunogen.
Dilution	Western Blot: 1/500 - 1/2000. Immunohistochemistry: 1/100 - 1/300. Immunofluorescence: 1/200 - 1/1000. ELISA: 1/10000. Not yet tested in other applications.
Concentration	1 mg/ml
Purity	≥90%
Storage Stability	-20°C/1 year
Synonyms	CDK15; ALS2CR7; PFTK2; Cyclin-dependent kinase 15; Amyotrophic lateral sclerosis 2 chromosomal region candidate gene 7 protein; Cell division protein kinase 15; Serine/threonine-protein kinase ALS2CR7; Serine/threonine-protein kinase PFTAIR
Observed Band	46kD
Cell Pathway	
Tissue Specificity	
Function	protein amino acid phosphorylation, phosphorus metabolic process, phosphate metabolic process, phosphorylation,
Background	CDK15 (Cyclin-Dependent Kinase 15) is a Protein Coding gene. Diseases associated with CDK15 include amyotrophic lateral sclerosis 2, juvenile. GO annotations related to this gene include transferase activity, transferring

Nanjing BYabs science technology Co.,Ltd



phosphorus-containing groups and protein tyrosine kinase activity. An important paralog of this gene is CDK14.

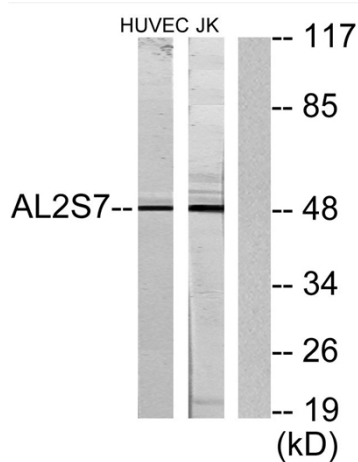
matters needing attention

Avoid repeated freezing and thawing!

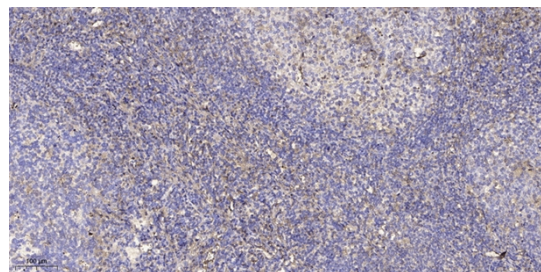
Usage suggestions

This product can be used in immunological reaction related experiments. For more information, please consult technical personnel.

Products Images



Western blot analysis of lysates from Jurkat and HUVEC cells, using AL2S7 Antibody. The lane on the right is blocked with the synthesized peptide.



Immunohistochemical analysis of paraffin-embedded human tonsil. 1, Antibody was diluted at 1:200(4° overnight). 2, Tris-EDTA,pH9.0 was used for antigen retrieval. 3,Secondary antibody was diluted at 1:200(room temperature, 30min).