



# Cables2 Polyclonal Antibody

|                    |   |
|--------------------|---|
| Catalog No         | BYab-12692  |
| Isotype            | IgG   |
| Reactivity         | Human;Mouse   |
| Applications       | WB;IHC;IF;ELISA   |
| Gene Name          | CABLES2   |
| Protein Name       | CDK5 and ABL1 enzyme substrate 2  |
| Immunogen          | The antiserum was produced against synthesized peptide derived from human Ik3-2. AA range:91-140  |
| Specificity        | Cables2 Polyclonal Antibody detects endogenous levels of Cables2 protein.   |
| Formulation        | Liquid in PBS containing 50% glycerol, 0.5% BSA and 0.02% sodium azide.   |
| Source             | Polyclonal, Rabbit,IgG  |
| Purification       | The antibody was affinity-purified from rabbit antiserum by affinity-chromatography using epitope-specific immunogen.   |
| Dilution           | Western Blot: 1/500 - 1/2000. Immunohistochemistry: 1/100 - 1/300. Immunofluorescence: 1/200 - 1/1000. ELISA: 1/10000. Not yet tested in other applications.  |
| Concentration      | 1 mg/ml   |
| Purity             | ≥90%  |
| Storage Stability  | -20°C/1 year  |
| Synonyms           | CABLES2; C20orf150; CDK5 and ABL1 enzyme substrate 2; Interactor with CDK3 2; Ik3-2   |
| Observed Band      | 60kD  |
| Cell Pathway       |   |
| Tissue Specificity | Eye,  |
| Function           | function:Unknown. Probably involved in G1-S cell cycle transition.,similarity:Belongs to the cyclin family.,subunit:Binds to CDK3, CDK5 and ABL1. The C-terminal cyclin-box-like region binds to CDK5., |
| Background         | function:Unknown. Probably involved in G1-S cell cycle transition.,similarity:Belongs to the cyclin family.,subunit:Binds to CDK3, CDK5 and ABL1. The C-terminal cyclin-box-like region binds to CDK5., |

Nanjing BYabscience technology Co.,Ltd

网址: [www.njbybio.com](http://www.njbybio.com)

官方热线: 025-5229-8998

监督电话: 15950492658



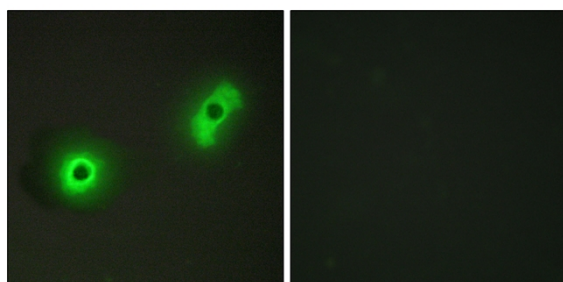
**matters needing attention**

Avoid repeated freezing and thawing!

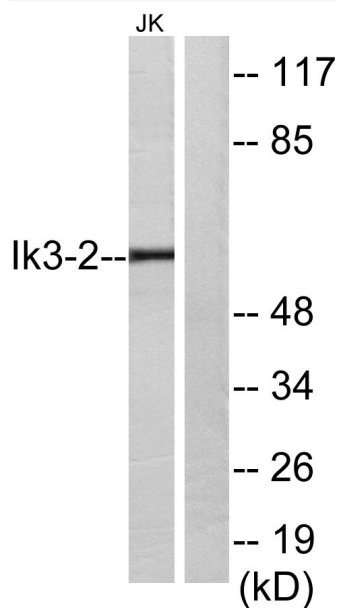
**Usage suggestions**

This product can be used in immunological reaction related experiments. For more information, please consult technical personnel.

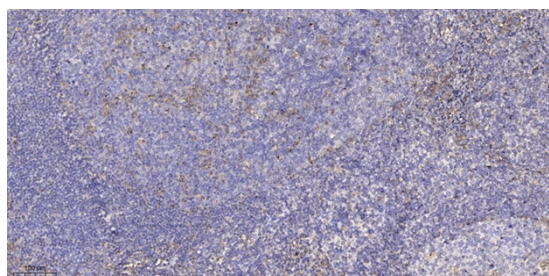
**Products Images**



Immunofluorescence analysis of A549 cells, using Ik3-2 Antibody. The picture on the right is blocked with the synthesized peptide.



Western blot analysis of lysates from Jurkat cells, using Ik3-2 Antibody. The lane on the right is blocked with the synthesized peptide.



Immunohistochemical analysis of paraffin-embedded human tonsil. 1, Antibody was diluted at 1:200(4° overnight). 2, Tris-EDTA,pH9.0 was used for antigen retrieval. 3,Secondary antibody was diluted at 1:200(room temperature, 30min).

**Nanjing BYabs science technology Co.,Ltd**

网址: [www.njbybio.com](http://www.njbybio.com)

官方热线: 025-5229-8998

监督电话: 15950492658