



CARD 10 Polyclonal Antibody

Catalog No	BYab-12693
Isotype	IgG
Reactivity	Human;Mouse
Applications	WB;IHC;IF;ELISA
Gene Name	CARD10
Protein Name	Caspase recruitment domain-containing protein 10
Immunogen	The antiserum was produced against synthesized peptide derived from human CARD10. AA range:481-530
Specificity	CARD 10 Polyclonal Antibody detects endogenous levels of CARD 10 protein.
Formulation	Liquid in PBS containing 50% glycerol, 0.5% BSA and 0.02% sodium azide.
Source	Polyclonal, Rabbit,IgG
Purification	The antibody was affinity-purified from rabbit antiserum by affinity-chromatography using epitope-specific immunogen.
Dilution	Western Blot: 1/500 - 1/2000. Immunohistochemistry: 1/100 - 1/300. Immunofluorescence: 1/200 - 1/1000. ELISA: 1/10000. Not yet tested in other applications.
Concentration	1 mg/ml
Purity	≥90%
Storage Stability	-20°C/1 year
Synonyms	CARD10; CARMA3; Caspase recruitment domain-containing protein 10; CARD-containing MAGUK protein 3; Carma 3
Observed Band	120kD
Cell Pathway	Cytoplasm .
Tissue Specificity	Detected in adult heart, kidney and liver; lower levels in intestine, placenta, muscle and lung. Also found in fetal lung, liver and kidney.
Function	caution:Supposed to contain a SH3, a PDZ and a guanylate kinase-like domain. But none of these 3 domains are detected by PROSITE, Pfam or SMART.,function:Activates NF-kappa-B via BCL10 and IKK.,similarity:Contains 1 CARD domain.,subunit:CARD10 and BCL10 bind to each other by CARD-CARD interaction. They both participate in a complex with MALT1, where MALT1 binds to BCL10.,tissue specificity:Detected in adult heart, kidney and liver; lower levels in intestine, placenta, muscle and lung. Also found in fetal lung, liver and kidney.,

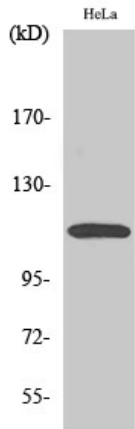
Nanjing BYabscience technology Co.,Ltd



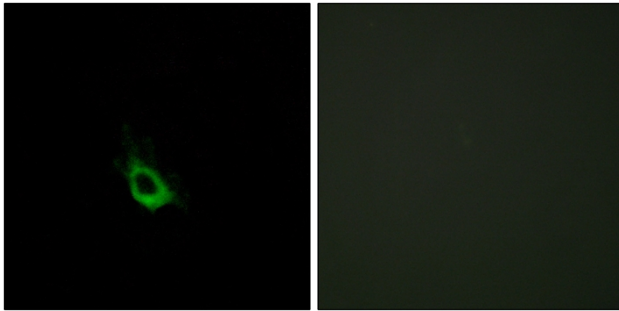
Background	The caspase recruitment domain (CARD) is a protein module that consists of 6 or 7 antiparallel alpha helices. It participates in apoptosis signaling through highly specific protein-protein homophilic interactions. Like several other CARD proteins, CARD10 belongs to the membrane-associated guanylate kinase (MAGUK) family and activates NF-kappa-B (NFKB; see MIM 164011) through BCL10 (MIM 603517) (Wang et al., 2001 [PubMed 11259443]).[supplied by OMIM, Mar 2008],
matters needing attention	Avoid repeated freezing and thawing!
Usage suggestions	This product can be used in immunological reaction related experiments. For more information, please consult technical personnel.



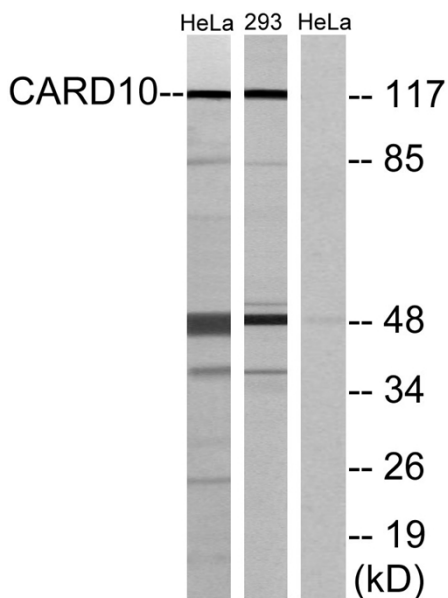
Products Images



Western Blot analysis of various cells using CARD 10 Polyclonal Antibody



Immunofluorescence analysis of HeLa cells, using CARD10 Antibody. The picture on the right is blocked with the synthesized peptide.



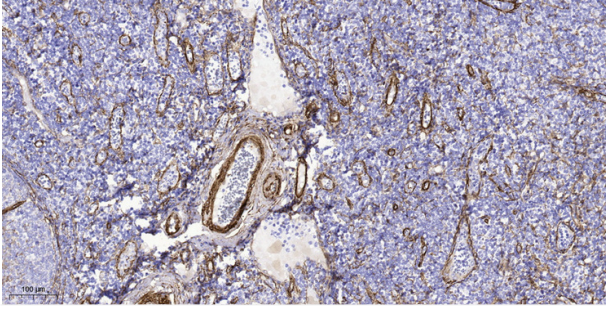
Western blot analysis of lysates from HeLa and 293 cells, using CARD10 Antibody. The lane on the right is blocked with the synthesized peptide.

Nanjing BYabscience technology Co.,Ltd

网址: www.njbybio.com

官方热线: 025-5229-8998

监督电话: 15950492658



Immunohistochemical analysis of paraffin-embedded human tonsil. 1, Tris-EDTA, pH 9.0 was used for antigen retrieval. 2 Antibody was diluted at 1:200 (4° overnight). 3, Secondary antibody was diluted at 1:200 (room temperature, 45 min).