



Cerebral 1 Polyclonal Antibody

Catalog No	BYab-12702
Isotype	IgG
Reactivity	Human;Rat;Mouse;
Applications	WB;IHC;IF;ELISA
Gene Name	RRP8
Protein Name	Ribosomal RNA-processing protein 8
Immunogen	The antiserum was produced against synthesized peptide derived from human HUCE1. AA range:271-320
Specificity	Cerebral 1 Polyclonal Antibody detects endogenous levels of Cerebral 1 protein.
Formulation	Liquid in PBS containing 50% glycerol, 0.5% BSA and 0.02% sodium azide.
Source	Polyclonal, Rabbit,IgG
Purification	The antibody was affinity-purified from rabbit antiserum by affinity-chromatography using epitope-specific immunogen.
Dilution	WB: 1/500 - 1/2000. IHC: 1/100 - 1/300. ELISA: 1/20000.. IF 1:50-200
Concentration	1 mg/ml
Purity	≥90%
Storage Stability	-20°C/1 year
Synonyms	RRP8; KIAA0409; NML; hucep-1; Ribosomal RNA-processing protein 8; Cerebral protein 1; Nucleomethylin
Observed Band	51kD
Cell Pathway	Nucleus, nucleolus . Localizes at rDNA locus.
Tissue Specificity	
Function	rRNA processing, RNA processing, rRNA metabolic process, ribonucleoprotein complex biogenesis, ncRNA processing,ncRNA metabolic process, ribosome biogenesis,
Background	RRP8 (Ribosomal RNA Processing 8, Methyltransferase, Homolog (Yeast) is a Protein Coding gene. Diseases associated with RRP8 include bowen-conradi syndrome and lymphatic system cancer. Among its related pathways are Gene Expression and Activated PKN1 stimulates transcription of AR (androgen receptor) regulated genes KLK2 and KLK3. GO annotations related to this gene include poly(A) RNA binding and methylated histone binding. ssential component of the eNoSC (energy-dependent nucleolar silencing) complex, a complex that

Nanjing BYabscience technology Co.,Ltd



mediates silencing of rDNA in response to intracellular energy status and acts by recruiting histone-modifying enzymes. The eNoSC complex is able to sense the energy status of cell: upon glucose starvation, elevation of NAD(+)/NADP(+) ratio activates SIRT1, leading to histone H3 deacetylation followed by dimethylation of H3 at Lys-9 (H3K9me2) by SUV39H1 and the formation of silent chromatin in the rDNA locus. In the complex, RRP8 binds to H3K9me2 and probably acts as a methyltransferase. Its substrates are however unknown.

matters needing attention

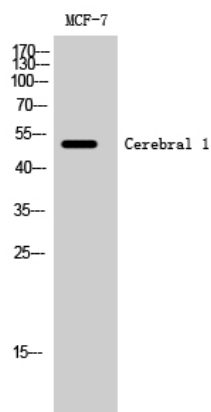
Avoid repeated freezing and thawing!

Usage suggestions

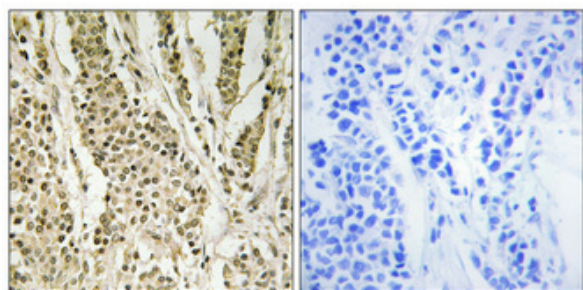
This product can be used in immunological reaction related experiments. For more information, please consult technical personnel.



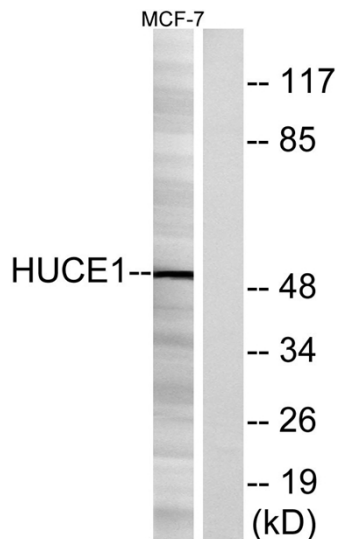
Products Images



Western Blot analysis of MCF-7 cells using Cerebral 1 Polyclonal Antibody cells nucleus extracted by Minute TM Cytoplasmic and Nuclear Fractionation kit (SC-003, Inventbiotech, MN, USA).



Immunohistochemical analysis of paraffin-embedded Human breast cancer. Antibody was diluted at 1:100 (4° overnight). High-pressure and temperature Tris-EDTA, pH 8.0 was used for antigen retrieval. Negative control (right) obtained from antibody was pre-absorbed by immunogen peptide.



Western blot analysis of lysates from MCF-7 cells, using HUCE1 Antibody. The lane on the right is blocked with the synthesized peptide.