



# NPY Polyclonal Antibody

Catalog No	BYab-12776
Isotype	IgG
Reactivity	Human;Mouse;Rat
Applications	WB;IHC;IF;ELISA
Gene Name	NPY
Protein Name	Pro-neuropeptide Y
Immunogen	The antiserum was produced against synthesized peptide derived from human NPY. AA range:45-94
Specificity	NPY Polyclonal Antibody detects endogenous levels of NPY protein.
Formulation	Liquid in PBS containing 50% glycerol, 0.5% BSA and 0.02% sodium azide.
Source	Polyclonal, Rabbit,IgG
Purification	The antibody was affinity-purified from rabbit antiserum by affinity-chromatography using epitope-specific immunogen.
Dilution	IHC-p 1:100-500, WB 1:500-2000,ELISA 1:5000-20000. IF 1:50-200
Concentration	1 mg/ml
Purity	≥90%
Storage Stability	-20°C/1 year
Synonyms	NPY; Pro-neuropeptide Y
Observed Band	
Cell Pathway	Secreted. Cytoplasmic vesicle, secretory vesicle, neuronal dense core vesicle .
Tissue Specificity	One of the most abundant peptides in the nervous system. Also found in some chromaffin cells of the adrenal medulla.
Function	function:NPY is implicated in the control of feeding and in secretion of gonadotrophin-release hormone.,online information:Neuropeptide Y entry,similarity:Belongs to the NPY family.,tissue specificity:One of the most abundant peptides in the nervous system. Also found in some chromaffin cells of the adrenal medulla.,
Background	This gene encodes a neuropeptide that is widely expressed in the central nervous system and influences many physiological processes, including cortical excitability, stress response, food intake, circadian rhythms, and cardiovascular function. The neuropeptide functions through G protein-coupled receptors to inhibit adenylyl cyclase, activate mitogen-activated protein kinase (MAPK),

Nanjing BYabscience technology Co.,Ltd



regulate intracellular calcium levels, and activate potassium channels. A polymorphism in this gene resulting in a change of leucine 7 to proline in the signal peptide is associated with elevated cholesterol levels, higher alcohol consumption, and may be a risk factor for various metabolic and cardiovascular diseases. The protein also exhibits antimicrobial activity against bacteria and fungi. [provided by RefSeq, Oct 2014],

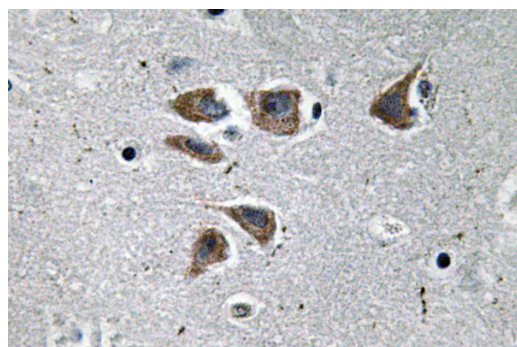
**matters needing attention**

Avoid repeated freezing and thawing!

**Usage suggestions**

This product can be used in immunological reaction related experiments. For more information, please consult technical personnel.

## Products Images



Immunohistochemistry analysis of NPY antibody in paraffin-embedded human brain tissue.