



SLC6A8 Polyclonal Antibody

Catalog No	BYab-12808
Isotype	IgG
Reactivity	Human;Mouse;Rat
Applications	WB;IHC
Gene Name	SLC6A8
Protein Name	Sodium- and chloride-dependent creatine transporter 1
Immunogen	The antiserum was produced against synthesized peptide derived from human SLC6A8. AA range:581-630
Specificity	SLC6A8 Polyclonal Antibody detects endogenous levels of SLC6A8 protein.
Formulation	Liquid in PBS containing 50% glycerol, 0.5% BSA and 0.02% sodium azide.
Source	Polyclonal, Rabbit,IgG
Purification	The antibody was affinity-purified from rabbit antiserum by affinity-chromatography using epitope-specific immunogen.
Dilution	WB 1:500-2000;IHC-p 1:50-300
Concentration	1 mg/ml
Purity	≥90%
Storage Stability	-20°C/1 year
Synonyms	SLC6A8; Sodium- and chloride-dependent creatine transporter 1; CT1; Creatine transporter 1; Solute carrier family 6 member 8
Observed Band	70kD
Cell Pathway	Membrane; Multi-pass membrane protein.
Tissue Specificity	Predominantly expressed in skeletal muscle and kidney. Also found in brain, heart, colon, testis and prostate.
Function	disease:Defects in SLC6A8 are the cause of X-linked creatine deficiency syndrome [MIM:300352]. X-linked creatine deficiency syndrome causes developmental delay, hypotonia, mental retardation, seizures, short stature and midface hypoplasia.,function:Required for the uptake of creatine in muscles and brain.,similarity:Belongs to the sodium:neurotransmitter symporter (SNF) family.,tissue specificity:Predominantly expressed in skeletal muscle and kidney. Also found in brain, heart, colon, testis and prostate.,
Background	The protein encoded by this gene is a plasma membrane protein whose function is to transport creatine into and out of cells. Defects in this gene can result in

Nanjing BYabscience technology Co.,Ltd



X-linked creatine deficiency syndrome. Multiple transcript variants encoding different isoforms have been found for this gene. [provided by RefSeq, Dec 2008],

matters needing attention

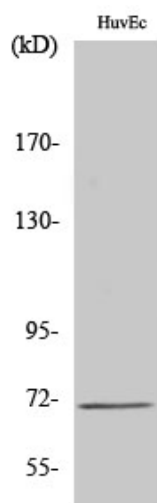
Avoid repeated freezing and thawing!

Usage suggestions

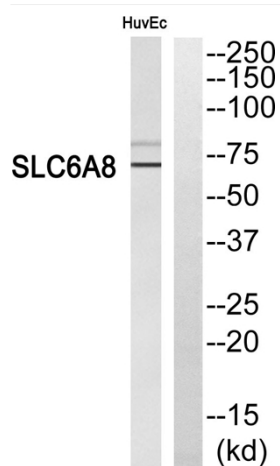
This product can be used in immunological reaction related experiments. For more information, please consult technical personnel.



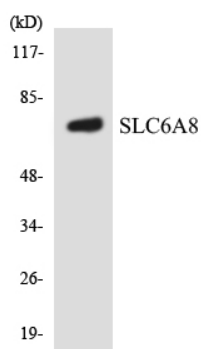
Products Images



Western Blot analysis of various cells using SLC6A8 Polyclonal Antibody



Western blot analysis of SLC6A8 Antibody. The lane on the right is blocked with the SLC6A8 peptide.



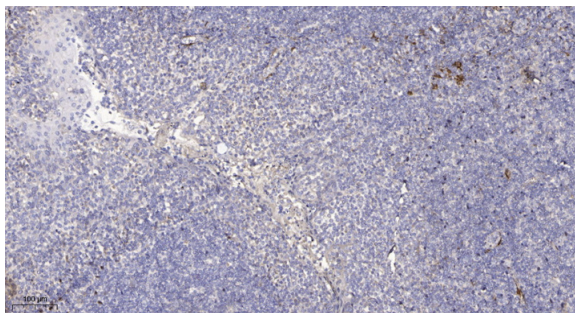
Western blot analysis of the lysates from HUVEC cells using SLC6A8 antibody.

Nanjing BYabs science technology Co.,Ltd

网址: www.njbybio.com

官方热线: 025-5229-8998

监督电话: 15950492658



Immunohistochemical analysis of paraffin-embedded human tonsil. 1, Antibody was diluted at 1:200(4° overnight). 2, Tris-EDTA,pH9.0 was used for antigen retrieval. 3,Secondary antibody was diluted at 1:200(room temperature, 45min).