



Slit3 Polyclonal Antibody

Catalog No	BYab-12809
Isotype	IgG
Reactivity	Human;Mouse;Rat
Applications	IHC;IF;ELISA
Gene Name	SLIT3
Protein Name	Slit homolog 3 protein
Immunogen	Synthesized peptide derived from the Internal region of human Slit3.
Specificity	Slit3 Polyclonal Antibody detects endogenous levels of Slit3 protein.
Formulation	Liquid in PBS containing 50% glycerol, 0.5% BSA and 0.02% sodium azide.
Source	Polyclonal, Rabbit,IgG
Purification	The antibody was affinity-purified from rabbit antiserum by affinity-chromatography using epitope-specific immunogen.
Dilution	IHC: 1/100 - 1/300. ELISA: 1/40000.. IF 1:50-200
Concentration	1 mg/ml
Purity	≥90%
Storage Stability	-20°C/1 year
Synonyms	SLIT3; KIAA0814; MEGF5; SLIL2; Slit homolog 3 protein; Slit-3; Multiple epidermal growth factor-like domains protein 5; Multiple EGF-like domains protein 5
Observed Band	
Cell Pathway	Secreted .
Tissue Specificity	Predominantly expressed in thyroid.
Function	function:May act as molecular guidance cue in cellular migration, and function may be mediated by interaction with roundabout homolog receptors.,sequence caution:Intron retention.,similarity:Contains 1 CTCK (C-terminal cystine knot-like) domain.,similarity:Contains 1 laminin G-like domain.,similarity:Contains 23 LRR (leucine-rich) repeats.,similarity:Contains 9 EGF-like domains.,tissue specificity:Predominantly expressed in thyroid.,
Background	The protein encoded by this gene is secreted, likely interacting with roundabout homolog receptors to effect cell migration. Two transcript variants encoding different isoforms have been found for this gene. [provided by RefSeq, Dec 2012],

Nanjing BYabscience technology Co.,Ltd

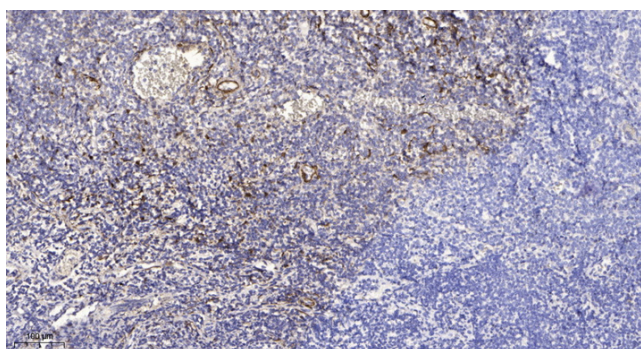
**matters needing attention**

Avoid repeated freezing and thawing!

Usage suggestions

This product can be used in immunological reaction related experiments. For more information, please consult technical personnel.

Products Images



Immunohistochemical analysis of paraffin-embedded human tonsil. 1, Antibody was diluted at 1:200(4° overnight). 2, Tris-EDTA,pH9.0 was used for antigen retrieval. 3,Secondary antibody was diluted at 1:200(room temperature, 30min).