



VN2R1P Polyclonal Antibody

Catalog No	BYab-12842
Isotype	IgG
Reactivity	Human;Rat;Mouse;
Applications	WB;IF;ELISA
Gene Name	CASRL1
Protein Name	Putative calcium-sensing receptor-like 1
Immunogen	The antiserum was produced against synthesized peptide derived from human CASRL1. AA range:400-449
Specificity	VN2R1P Polyclonal Antibody detects endogenous levels of VN2R1P protein.
Formulation	Liquid in PBS containing 50% glycerol, 0.5% BSA and 0.02% sodium azide.
Source	Polyclonal, Rabbit,IgG
Purification	The antibody was affinity-purified from rabbit antiserum by affinity-chromatography using epitope-specific immunogen.
Dilution	Western Blot: 1/500 - 1/2000. Immunofluorescence: 1/200 - 1/1000. ELISA: 1/10000. Not yet tested in other applications.
Concentration	1 mg/ml
Purity	≥90%
Storage Stability	-20°C/1 year
Synonyms	
Observed Band	83kD
Cell Pathway	
Tissue Specificity	
Function	
Background	The CARL-1 monoclonal antibody reacts with human TWEAK, a type II transmembrane TNF superfamily member with high identity to TNF in its extracellular portion. TWEAK transcript is expressed broadly in many adult and fetal tissues, however, the staining of human peripheral blood mononuclear cells with monoclonal antibodies shows a more restricted pattern. While freshly isolated PBMCs do not express detectable levels of TWEAK on their surface, IFN-gamma-stimulated blood monocytes rapidly upregulate TWEAK surface expression. TWEAK is expressed as membrane bound and secreted forms.

Nanjing BYabscience technology Co.,Ltd



Interaction of TWEAK with its counter-receptor promotes secretion of IL-8, activation of NF-kappaB, proliferation of endothelial cells, and apoptosis in a number of human cell lines. Initially, DR3 was thought to be a receptor for TWEAK, but further studies have shown that TWEAK could induce apoptosis via receptors distinct from DR3. While TWEAK exhibits overlapping signaling functions to TNF, it is generally less effective in inducing apoptosis, giving rise to its name, TNF-like weak inducer of apoptosis. For detection of human TWEAK by sandwich ELISA, a combination of purified CARL-2 for capture and biotinylated CARL-1 for detection is recommended.

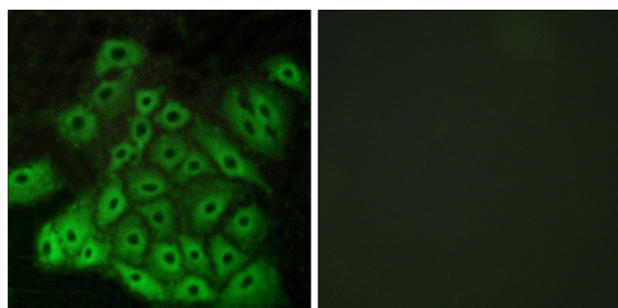
matters needing attention

Avoid repeated freezing and thawing!

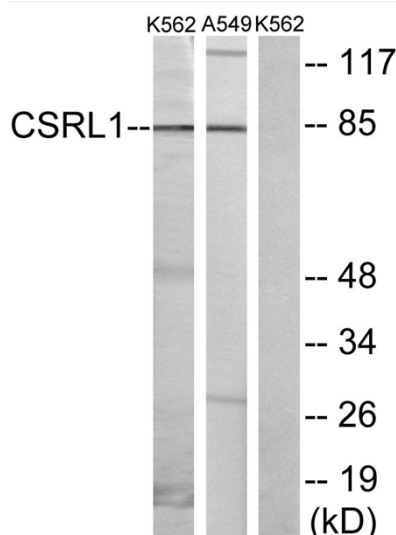
Usage suggestions

This product can be used in immunological reaction related experiments. For more information, please consult technical personnel.

Products Images



Immunofluorescence analysis of A549 cells, using CSRL1 Antibody. The picture on the right is blocked with the synthesized peptide.



Western blot analysis of lysates from K562 cells and A549 cells, using CSRL1 Antibody. The lane on the right is blocked with the synthesized peptide.

Nanjing BYabs science technology Co.,Ltd

网址: www.njbybio.com

官方热线: 025-5229-8998

监督电话: 15950492658