



Aladin Polyclonal Antibody

Catalog No	BYab-12847
Isotype	IgG
Reactivity	Human;Rat
Applications	WB;ELISA
Gene Name	AAAS
Protein Name	Aladin
Immunogen	Synthesized peptide derived from Aladin . at AA range: 360-440
Specificity	Aladin Polyclonal Antibody detects endogenous levels of Aladin protein.
Formulation	Liquid in PBS containing 50% glycerol, 0.5% BSA and 0.02% sodium azide.
Source	Polyclonal, Rabbit,IgG
Purification	The antibody was affinity-purified from rabbit antiserum by affinity-chromatography using epitope-specific immunogen.
Dilution	Western Blot: 1/500 - 1/2000. ELISA: 1/40000. Not yet tested in other applications.
Concentration	1 mg/ml
Purity	≥90%
Storage Stability	-20°C/1 year
Synonyms	AAAS; ADRACALA; GL003; Aladin; Adracalin
Observed Band	59kD
Cell Pathway	Nucleus, nuclear pore complex . Cytoplasm, cytoskeleton, spindle pole . Nucleus envelope . In metaphase cells localizes within the spindle with some accumulation around spindle poles, with the highest concentration between the centrosome and metaphase plate (PubMed:26246606). The localization to the spindle is microtubule-mediated (PubMed:26246606). .
Tissue Specificity	Widely expressed (PubMed:11159947, PubMed:16022285). Particularly abundant in cerebellum, corpus callosum, adrenal gland, pituitary gland, gastrointestinal structures and fetal lung (PubMed:11159947).
Function	disease:Defects in AAAS are the cause of achalasia-addisonianism-alacrima syndrome (AAAS) [MIM:231550]; also known as triple-A syndrome or Allgrove syndrome. AAAS is an autosomal recessive disorder characterized by adreno-corticotrophic hormone (ACTH)-resistant adrenal failure, achalasia of the esophageal cardia and alacrima. The syndrome is associated with variable and progressive neurological impairment involving the central, peripheral, and autonomic nervous system. Other features such as palmo-plantar hyperkeratosis,

Nanjing BYabscience technology Co.,Ltd



short stature, facial dysmorphism and osteoporosis may also be present.,function:Plays a role in the normal development of the peripheral and central nervous system.,similarity:Contains 4 WD repeats.,tissue specificity:Widely expressed. Particularly abundant expression is found in cerebellum, corpus callosum, adrenal gland, pituitary gland, gastrointestinal structures and feta

Background

The protein encoded by this gene is a member of the WD-repeat family of regulatory proteins and may be involved in normal development of the peripheral and central nervous system. The encoded protein is part of the nuclear pore complex and is anchored there by NDC1. Defects in this gene are a cause of achalasia-addisonianism-alacrima syndrome (AAAS), also called triple-A syndrome or Allgrove syndrome. Two transcript variants encoding different isoforms have been found for this gene. [provided by RefSeq, Mar 2010],

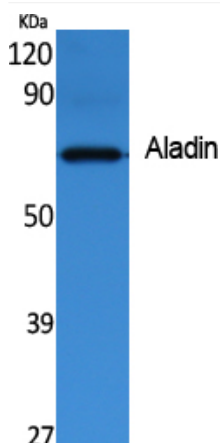
matters needing attention

Avoid repeated freezing and thawing!

Usage suggestions

This product can be used in immunological reaction related experiments. For more information, please consult technical personnel.

Products Images



Western Blot analysis of extracts from rat kidney, using Aladin Polyclonal Antibody. Secondary antibody(catalog#:RS0002) was diluted at 1:20000 cells nucleus extracted by Minute TM Cytoplasmic and Nuclear Fractionation kit (SC-003, Invent biotech, MN, USA).