



SV2C Polyclonal Antibody

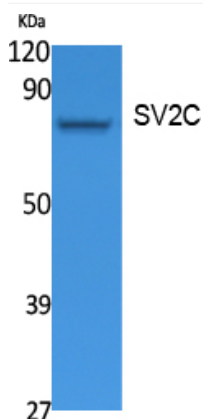
Catalog No	BYab-12850
Isotype	IgG
Reactivity	Human;Mouse;Rat
Applications	WB;IHC;IF;ELISA
Gene Name	SV2C
Protein Name	Synaptic vesicle glycoprotein 2C
Immunogen	Synthesized peptide derived from the Internal region of human SV2C. AA range 330-390
Specificity	SV2C Polyclonal Antibody detects endogenous levels of SV2C protein.
Formulation	Liquid in PBS containing 50% glycerol, 0.5% BSA and 0.02% sodium azide.
Source	Polyclonal, Rabbit,IgG
Purification	The antibody was affinity-purified from rabbit antiserum by affinity-chromatography using epitope-specific immunogen.
Dilution	WB: 1/500 - 1/2000. IHC-p: 1:100-300 ELISA: 1/20000.. IF 1:50-200
Concentration	1 mg/ml
Purity	≥90%
Storage Stability	-20°C/1 year
Synonyms	SV2C; KIAA1054; Synaptic vesicle glycoprotein 2C
Observed Band	82kD
Cell Pathway	Cytoplasmic vesicle, secretory vesicle, synaptic vesicle membrane ; Multi-pass membrane protein . Enriched in small synaptic vesicles and adrenal microsomes, not present in chromaffin granules. Associated with both insulin granules and synaptic-like microvesicles in insulin-secreting cells of the pancreas. .
Tissue Specificity	Brain,
Function	function:Plays a role in the control of regulated secretion in neural and endocrine cells, enhancing selectively low-frequency neurotransmission. Positively regulates vesicle fusion by maintaining the readily releasable pool of secretory vesicles.,PTM:N-glycosylated.,similarity:Belongs to the major facilitator superfamily.,subcellular location:Enriched in small synaptic vesicles and adrenal microsomes, not present in chromaffin granules. Associated with both insulin granules and synaptic-like microvesicles in insulin-secreting cells of the pancreas.,subunit:Interacts with SYT1 in a calcium-dependent manner.,

Nanjing BYabscience technology Co.,Ltd

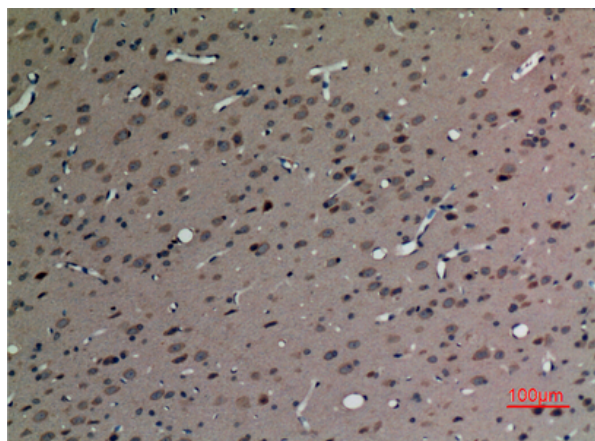


Background	function:Plays a role in the control of regulated secretion in neural and endocrine cells, enhancing selectively low-frequency neurotransmission. Positively regulates vesicle fusion by maintaining the readily releasable pool of secretory vesicles.,PTM:N-glycosylated.,similarity:Belongs to the major facilitator superfamily.,subcellular location:Enriched in small synaptic vesicles and adrenal microsomes, not present in chromaffin granules. Associated with both insulin granules and synaptic-like microvesicles in insulin-secreting cells of the pancreas.,subunit:Interacts with SYT1 in a calcium-dependent manner.,
matters needing attention	Avoid repeated freezing and thawing!
Usage suggestions	This product can be used in immunological reaction related experiments. For more information, please consult technical personnel.

Products Images



Western Blot analysis of extracts from Jurkat cells, using SV2C Polyclonal Antibody. Secondary antibody(catalog#:RS0002) was diluted at 1:20000



Immunohistochemical analysis of paraffin-embedded rat-brain, antibody was diluted at 1:100

Nanjing BYabscience technology Co.,Ltd

网址: www.njbybio.com

官方热线: 025-5229-8998

监督电话: 15950492658