



# PSP Polyclonal Antibody

Catalog No	BYab-12856
Isotype	IgG
Reactivity	Human;Rat;Mouse;
Applications	WB;ELISA;IHC
Gene Name	PSPN
Protein Name	Persephin
Immunogen	The antiserum was produced against synthesized peptide derived from the C-terminal region of human PSPN. AA range:101-150
Specificity	PSP Polyclonal Antibody detects endogenous levels of PSP protein.
Formulation	Liquid in PBS containing 50% glycerol, 0.5% BSA and 0.02% sodium azide.
Source	Polyclonal, Rabbit,IgG
Purification	The antibody was affinity-purified from rabbit antiserum by affinity-chromatography using epitope-specific immunogen.
Dilution	WB 1:500-2000;IHC-p 1:50-300; ELISA 2000-20000
Concentration	1 mg/ml
Purity	≥90%
Storage Stability	-20°C/1 year
Synonyms	PSPN; Persephin; PSP
Observed Band	16kD
Cell Pathway	Secreted.
Tissue Specificity	
Function	function:Exhibits neurotrophic activity on mesencephalic dopaminergic and motor neurons.,similarity:Belongs to the TGF-beta family. GDNF subfamily.,subunit:Homodimer; disulfide-linked.,
Background	persephin(PSPN) Homo sapiens This gene encodes a secreted ligand of the GDNF (glial cell line-derived neurotrophic factor) subfamily and TGF-beta (transforming growth factor-beta) superfamily of proteins. The encoded preproprotein is proteolytically processed to generate the mature protein. This protein signals through the RET receptor tyrosine kinase and a GPI-linked coreceptor, and promotes survival of neuronal populations. This protein may play a role in cell death, and nervous system development and function. Elevated

Nanjing BYabscience technology Co.,Ltd



expression of this gene has been observed in oral squamous cell carcinoma.  
[provided by RefSeq, Aug 2016],

**matters needing  
attention**

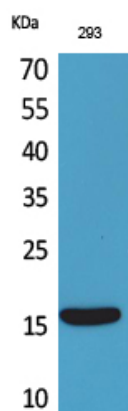
Avoid repeated freezing and thawing!

**Usage suggestions**

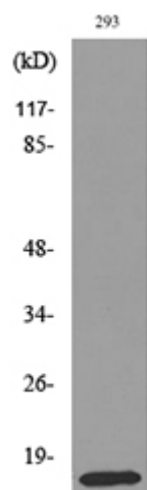
This product can be used in immunological reaction related experiments. For  
more information, please consult technical personnel.



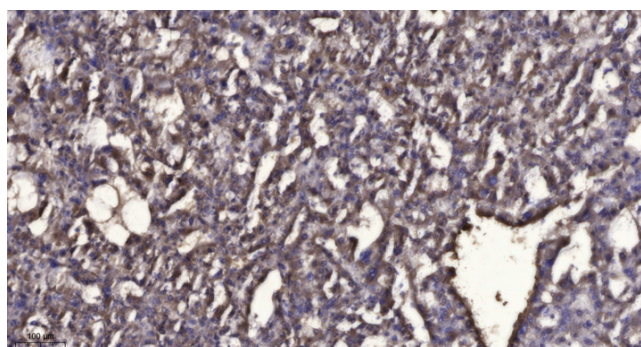
## Products Images



Western Blot analysis of 293 cells using PSP Polyclonal Antibody. Secondary antibody(catalog#:RS0002) was diluted at 1:20000



Western blot analysis of lysate from 293 cells, using PSPN Antibody.



Immunohistochemical analysis of paraffin-embedded human liver cancer. 1, Antibody was diluted at 1:200(4° overnight). 2, Tris-EDTA,pH9.0 was used for antigen retrieval. 3,Secondary antibody was diluted at 1:200(room temperature, 45min).