



# Neu (phospho Tyr877) Polyclonal Antibody

|                           |                                                                                                                                                                                                                                                                                                                                                                                                                 |
|---------------------------|-----------------------------------------------------------------------------------------------------------------------------------------------------------------------------------------------------------------------------------------------------------------------------------------------------------------------------------------------------------------------------------------------------------------|
| <b>Catalog No</b>         | BYab-12986                                                                                                                                                                                                                                                                                                                                                                                                      |
| <b>Isotype</b>            | IgG                                                                                                                                                                                                                                                                                                                                                                                                             |
| <b>Reactivity</b>         | Human;Mouse;Rat                                                                                                                                                                                                                                                                                                                                                                                                 |
| <b>Applications</b>       | WB;IHC;IF;IP;ELISA                                                                                                                                                                                                                                                                                                                                                                                              |
| <b>Gene Name</b>          | ERBB2                                                                                                                                                                                                                                                                                                                                                                                                           |
| <b>Protein Name</b>       | Receptor tyrosine-protein kinase erbB-2                                                                                                                                                                                                                                                                                                                                                                         |
| <b>Immunogen</b>          | The antiserum was produced against synthesized peptide derived from human HER2 around the phosphorylation site of Tyr877. AA range:851-900                                                                                                                                                                                                                                                                      |
| <b>Specificity</b>        | Phospho-Neu (Y877) Polyclonal Antibody detects endogenous levels of Neu protein only when phosphorylated at Y877.                                                                                                                                                                                                                                                                                               |
| <b>Formulation</b>        | Liquid in PBS containing 50% glycerol, 0.5% BSA and 0.02% sodium azide.                                                                                                                                                                                                                                                                                                                                         |
| <b>Source</b>             | Polyclonal, Rabbit,IgG                                                                                                                                                                                                                                                                                                                                                                                          |
| <b>Purification</b>       | The antibody was affinity-purified from rabbit antiserum by affinity-chromatography using epitope-specific immunogen.                                                                                                                                                                                                                                                                                           |
| <b>Dilution</b>           | WB: 1/500 - 1/2000. IHC: 1/100 - 1/300. Immunoprecipitation: 2-5 ug/mg lysate. ELISA: 1/10000.. IF 1:50-200                                                                                                                                                                                                                                                                                                     |
| <b>Concentration</b>      | 1 mg/ml                                                                                                                                                                                                                                                                                                                                                                                                         |
| <b>Purity</b>             | ≥90%                                                                                                                                                                                                                                                                                                                                                                                                            |
| <b>Storage Stability</b>  | -20°C/1 year                                                                                                                                                                                                                                                                                                                                                                                                    |
| <b>Synonyms</b>           | ERBB2; HER2; MLN19; NEU; NGL; Receptor tyrosine-protein kinase erbB-2; Metastatic lymph node gene 19 protein; MLN 19; Proto-oncogene Neu; Proto-oncogene c-ErbB-2; Tyrosine kinase-type cell surface receptor HER2; p185erbB2; CD antigen CD340                                                                                                                                                                 |
| <b>Observed Band</b>      | 180kD                                                                                                                                                                                                                                                                                                                                                                                                           |
| <b>Cell Pathway</b>       | [Isoform 1]: Cell membrane ; Single-pass type I membrane protein. Early endosome . Cytoplasm, perinuclear region. Nucleus. Translocation to the nucleus requires endocytosis, probably endosomal sorting and is mediated by importin beta-1/KPNB1. Also detected in VPS35-positive endosome-to-TGN retrograde vesicles (PubMed:31138794). .; [Isoform 2]: Cytoplasm. Nucleus.; [Isoform 3]: Cytoplasm. Nucleus. |
| <b>Tissue Specificity</b> | Expressed in a variety of tumor tissues including primary breast tumors and tumors from small bowel, esophagus, kidney and mouth.                                                                                                                                                                                                                                                                               |
| <b>Function</b>           | catalytic activity:ATP + a [protein]-L-tyrosine = ADP + a [protein]-L-tyrosine phosphate.,disease:Defects in ERBB2 are associated with familial glioma of brain                                                                                                                                                                                                                                                 |

**Nanjing BYabscience technology Co.,Ltd**



[MIM:137800]; also called glioblastoma multiforme. Gliomas are central nervous system neoplasms derived from glial cells and comprise astrocytomas, glioblastoma multiforme, oligodendrogliomas, and ependymomas.,disease:Defects in ERBB2 are associated with gastric cancer [MIM:137215]; also known as hereditary familial diffuse gastric cancer (HDGC),disease:Defects in ERBB2 are associated with lung cancer [MIM:211980]; also called adenocarcinoma of lung.,disease:Defects in ERBB2 are associated with ovarian cancer [MIM:167000]. Ovarian cancer is the leading cause of death from gynecologic malignancy. It is characterized by advanced presentation with loco-regional dissemination in the peritoneal cavity and the rare incidence of viscera

**Background**

This gene encodes a member of the epidermal growth factor (EGF) receptor family of receptor tyrosine kinases. This protein has no ligand binding domain of its own and therefore cannot bind growth factors. However, it does bind tightly to other ligand-bound EGF receptor family members to form a heterodimer, stabilizing ligand binding and enhancing kinase-mediated activation of downstream signalling pathways, such as those involving mitogen-activated protein kinase and phosphatidylinositol-3 kinase. Allelic variations at amino acid positions 654 and 655 of isoform a (positions 624 and 625 of isoform b) have been reported, with the most common allele, Ile654/Ile655, shown here. Amplification and/or overexpression of this gene has been reported in numerous cancers, including breast and ovarian tumors. Alternative splicing results in several additional transcript variants, some encoding d

**matters needing attention**

Avoid repeated freezing and thawing!

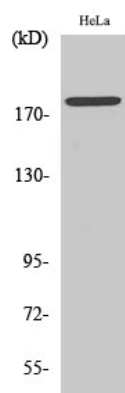
**Usage suggestions**

This product can be used in immunological reaction related experiments. For more information, please consult technical personnel.

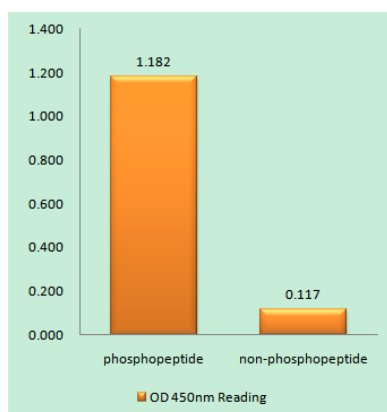
Nanjing BYabscience technology Co.,Ltd



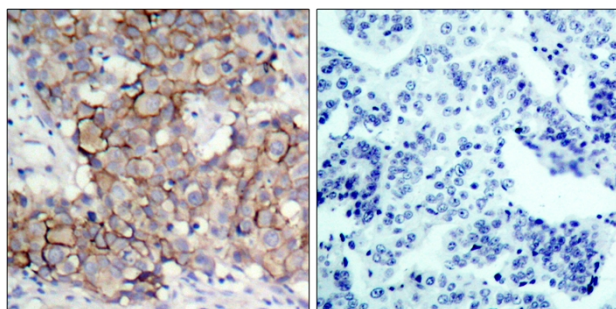
## Products Images



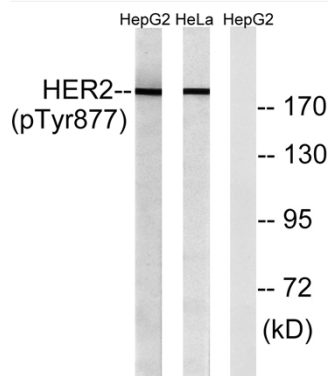
Western Blot analysis of various cells using Phospho-Neu (Y877) Polyclonal Antibody diluted at 1:500



Enzyme-Linked Immunosorbent Assay (Phospho-ELISA) for Immunogen Phosphopeptide (Phospho-left) and Non-Phosphopeptide (Phospho-right), using HER2 (Phospho-Tyr877) Antibody



Immunohistochemistry analysis of paraffin-embedded human breast carcinoma, using HER2 (Phospho-Tyr877) Antibody. The picture on the right is blocked with the phosphopeptide.



Western blot analysis of lysates from HepG2 cells and HeLa cells, using HER2 (Phospho-Tyr877) Antibody. The lane on the right is blocked with the phosphopeptide.

**Nanjing BYabs science technology Co.,Ltd**

网址: [www.njbybio.com](http://www.njbybio.com)

官方热线: 025-5229-8998

监督电话: 15950492658