



c-Fms (phospho Tyr723) Polyclonal Antibody

Catalog No	BYab-13038
Isotype	IgG
Reactivity	Human;Mouse;Rat
Applications	WB;IHC;IF;ELISA
Gene Name	CSF1R
Protein Name	Macrophage colony-stimulating factor 1 receptor
Immunogen	The antiserum was produced against synthesized peptide derived from human M-CSF Receptor around the phosphorylation site of Tyr723. AA range:691-740
Specificity	Phospho-c-Fms (Y723) Polyclonal Antibody detects endogenous levels of c-Fms protein only when phosphorylated at Y723.
Formulation	Liquid in PBS containing 50% glycerol, 0.5% BSA and 0.02% sodium azide.
Source	Polyclonal, Rabbit,IgG
Purification	The antibody was affinity-purified from rabbit antiserum by affinity-chromatography using epitope-specific immunogen.
Dilution	WB: 1/500 - 1/2000. IHC: 1/100 - 1/300. ELISA: 1/5000.. IF 1:50-200
Concentration	1 mg/ml
Purity	≥90%
Storage Stability	-20°C/1 year
Synonyms	CSF1R; FMS; Macrophage colony-stimulating factor 1 receptor; CSF-1 receptor; CSF-1-R; CSF-1R; M-CSF-R; Proto-oncogene c-Fms; CD antigen CD115
Observed Band	130-170kD
Cell Pathway	Cell membrane; Single-pass type I membrane protein.
Tissue Specificity	Expressed in bone marrow and in differentiated blood mononuclear cells.
Function	catalytic activity:ATP + a [protein]-L-tyrosine = ADP + a [protein]-L-tyrosine phosphate.;function:Protein tyrosine-kinase transmembrane receptor for CSF1 and IL34.;similarity:Belongs to the protein kinase superfamily. Tyr protein kinase family.;similarity:Belongs to the protein kinase superfamily. Tyr protein kinase family. CSF-1/PDGF receptor subfamily.;similarity:Contains 1 protein kinase domain.;similarity:Contains 5 Ig-like C2-type (immunoglobulin-like) domains.;subunit:Interacts with INPPL1/SHIP2 and THOC5.;tissue specificity:Expressed in bone marrow and in differentiated blood mononuclear cells.;

Nanjing BYabscience technology Co.,Ltd

**Background**

The protein encoded by this gene is the receptor for colony stimulating factor 1, a cytokine which controls the production, differentiation, and function of macrophages. This receptor mediates most if not all of the biological effects of this cytokine. Ligand binding activates the receptor kinase through a process of oligomerization and transphosphorylation. The encoded protein is a tyrosine kinase transmembrane receptor and member of the CSF1/PDGF receptor family of tyrosine-protein kinases. Mutations in this gene have been associated with a predisposition to myeloid malignancy. The first intron of this gene contains a transcriptionally inactive ribosomal protein L7 processed pseudogene oriented in the opposite direction. Alternative splicing results in multiple transcript variants. [provided by RefSeq, Dec 2013],

matters needing attention

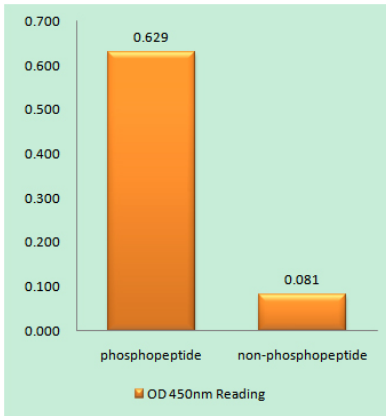
Avoid repeated freezing and thawing!

Usage suggestions

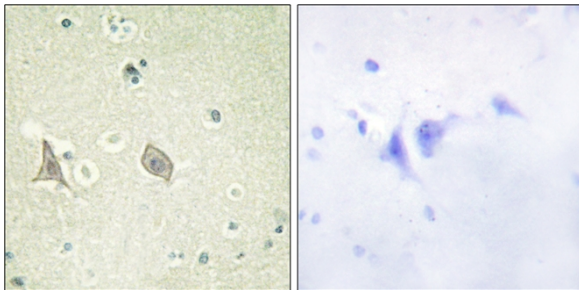
This product can be used in immunological reaction related experiments. For more information, please consult technical personnel.



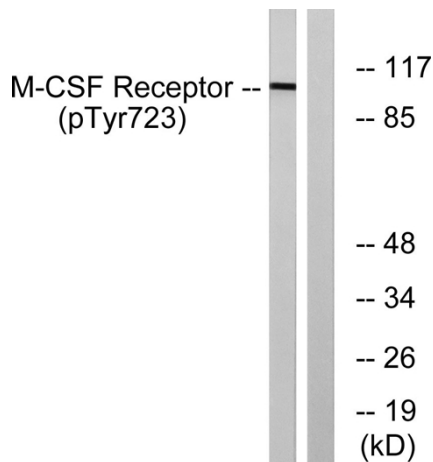
Products Images



Enzyme-Linked Immunosorbent Assay (Phospho-ELISA) for Immunogen Phosphopeptide (Phospho-left) and Non-Phosphopeptide (Phospho-right), using M-CSF Receptor (Phospho-Tyr723) Antibody



Immunohistochemistry analysis of paraffin-embedded human brain, using M-CSF Receptor (Phospho-Tyr723) Antibody. The picture on the right is blocked with the phospho peptide.



Western blot analysis of lysates from HUVEC cells treated with PMA 125ng/ml 30', using M-CSF Receptor (Phospho-Tyr723) Antibody. The lane on the right is blocked with the phospho peptide.

Nanjing BYabscience technology Co.,Ltd