



Met (phospho Tyr1003) Polyclonal Antibody

Catalog No	BYab-13051
Isotype	IgG
Reactivity	Human;Mouse;Rat
Applications	WB;IHC;IF;ELISA
Gene Name	MET
Protein Name	Hepatocyte growth factor receptor
Immunogen	The antiserum was produced against synthesized peptide derived from human c-Met around the phosphorylation site of Tyr1003. AA range:976-1025
Specificity	Phospho-Met (Y1003) Polyclonal Antibody detects endogenous levels of Met protein only when phosphorylated at Y1003.
Formulation	Liquid in PBS containing 50% glycerol, 0.5% BSA and 0.02% sodium azide.
Source	Polyclonal, Rabbit,IgG
Purification	The antibody was affinity-purified from rabbit antiserum by affinity-chromatography using epitope-specific immunogen.
Dilution	Western Blot: 1/500 - 1/2000. Immunohistochemistry: 1/100 - 1/300. Immunofluorescence: 1/200 - 1/1000. ELISA: 1/40000. Not yet tested in other applications.
Concentration	1 mg/ml
Purity	≥90%
Storage Stability	-20°C/1 year
Synonyms	MET; Hepatocyte growth factor receptor; HGF receptor; HGF/SF receptor; Proto-oncogene c-Met; Scatter factor receptor; SF receptor; Tyrosine-protein kinase Met
Observed Band	155kD
Cell Pathway	Membrane; Single-pass type I membrane protein.; [Isoform 3]: Secreted.
Tissue Specificity	Expressed in normal hepatocytes as well as in epithelial cells lining the stomach, the small and the large intestine. Found also in basal keratinocytes of esophagus and skin. High levels are found in liver, gastrointestinal tract, thyroid and kidney. Also present in the brain. Expressed in metaphyseal bone (at protein level) (PubMed:26637977).
Function	catalytic activity:ATP + a [protein]-L-tyrosine = ADP + a [protein]-L-tyrosine phosphate.;disease:Activation of MET after rearrangement with the TPR gene produces an oncogenic protein.;disease:Defects in MET are a cause of hepatocellular carcinoma (HCC) [MIM:114550].;disease:Defects in MET are a

Nanjing BYabscience technology Co.,Ltd



cause of hereditary papillary renal carcinoma (HPRC) [MIM:605074]; also known as papillary renal cell carcinoma 2 (RCCP2). HPRC is a form of inherited kidney cancer characterized by a predisposition to develop multiple, bilateral papillary renal tumors. The pattern of inheritance is consistent with autosomal dominant transmission with reduced penetrance.,disease:Defects in MET may be associated with gastric cancer.,disease:Genetic variations in MET may be associated with susceptibility to autism type 9 (AUTS9) [MIM:611015]. Autism is a neurodevelopmental disorder characterized by disturbance in I

Background

This gene encodes a member of the receptor tyrosine kinase family of proteins and the product of the proto-oncogene MET. The encoded preproprotein is proteolytically processed to generate alpha and beta subunits that are linked via disulfide bonds to form the mature receptor. Further processing of the beta subunit results in the formation of the M10 peptide, which has been shown to reduce lung fibrosis. Binding of its ligand, hepatocyte growth factor, induces dimerization and activation of the receptor, which plays a role in cellular survival, embryogenesis, and cellular migration and invasion. Mutations in this gene are associated with papillary renal cell carcinoma, hepatocellular carcinoma, and various head and neck cancers. Amplification and overexpression of this gene are also associated with multiple human cancers. [provided by RefSeq, May 2016],

matters needing attention

Avoid repeated freezing and thawing!

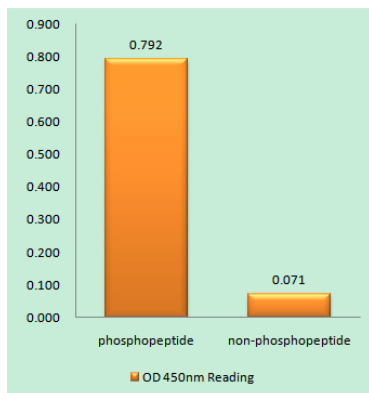
Usage suggestions

This product can be used in immunological reaction related experiments. For more information, please consult technical personnel.

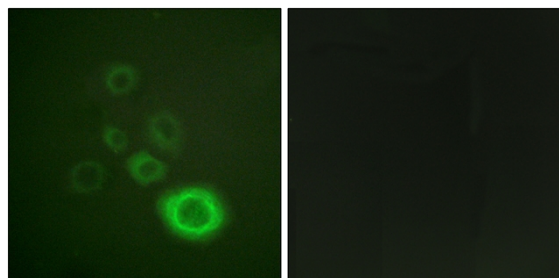
Nanjing BYabscience technology Co.,Ltd



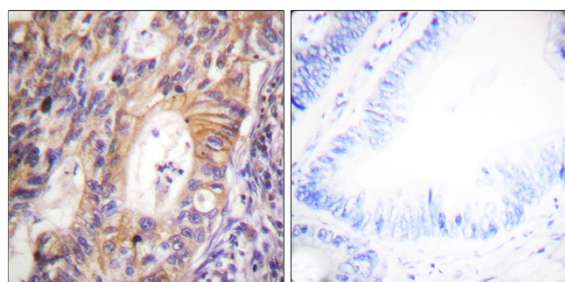
Products Images



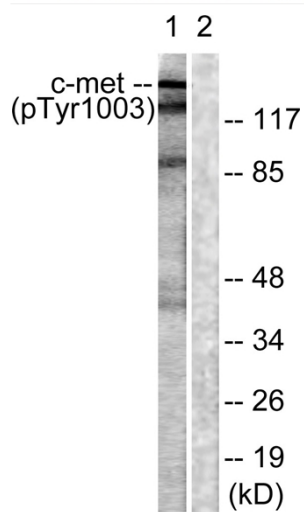
Enzyme-Linked Immunosorbent Assay
(Phospho-ELISA) for Immunogen Phosphopeptide
(Phospho-left) and Non-Phosphopeptide
(Phospho-right), using c-Met (Phospho-Tyr1003)
Antibody



Immunofluorescence analysis of HepG2 cells, using
c-Met (Phospho-Tyr1003) Antibody. The picture on the
right is blocked with the phospho peptide.



Immunohistochemistry analysis of paraffin-embedded
human colon carcinoma, using c-Met
(Phospho-Tyr1003) Antibody. The picture on the right
is blocked with the phospho peptide.



Western blot analysis of lysates from HepG2 cells,
using c-Met (Phospho-Tyr1003) Antibody. The lane on
the right is blocked with the phospho peptide.

Nanjing BYabscience technology Co.,Ltd