



IL-8R β (phospho Ser347) Polyclonal Antibody

Catalog No	BYab-13056
Isotype	IgG
Reactivity	Human;Mouse
Applications	WB;IHC;IF;ELISA
Gene Name	CXCR2
Protein Name	C-X-C chemokine receptor type 2
Immunogen	The antiserum was produced against synthesized peptide derived from human IL-8R beta/CDw128 beta around the phosphorylation site of Ser347. AA range:311-360
Specificity	Phospho-IL-8R β (S347) Polyclonal Antibody detects endogenous levels of IL-8R β protein only when phosphorylated at S347.
Formulation	Liquid in PBS containing 50% glycerol, 0.5% BSA and 0.02% sodium azide.
Source	Polyclonal, Rabbit,IgG
Purification	The antibody was affinity-purified from rabbit antiserum by affinity-chromatography using epitope-specific immunogen.
Dilution	Western Blot: 1/500 - 1/2000. Immunohistochemistry: 1/100 - 1/300. Immunofluorescence: 1/200 - 1/1000. ELISA: 1/10000. Not yet tested in other applications.
Concentration	1 mg/ml
Purity	$\geq 90\%$
Storage Stability	-20°C/1 year
Synonyms	CXCR2; IL8RB; C-X-C chemokine receptor type 2; CXC-R2; CXCR-2; CDw128b; GRO/MGSA receptor; High affinity interleukin-8 receptor B; IL-8R B; IL-8 receptor type 2; CD antigen CD182
Observed Band	48kD
Cell Pathway	Cell membrane; Multi-pass membrane protein.
Tissue Specificity	Brain,Placenta,
Function	function:Receptor for interleukin-8 which is a powerful neutrophil chemotactic factor. Binding of IL-8 to the receptor causes activation of neutrophils. This response is mediated via a G-protein that activates a phosphatidylinositol-calcium second messenger system. Binds to IL-8 with high affinity. Also binds with high affinity to CXCL3, GRO/MGSA and NAP-2..online information:CXC chemokine receptors entry,PTM:Phosphorylated upon ligand binding; which is required for

Nanjing BYabs science technology Co.,Ltd



desensitization.,similarity:Belongs to the G-protein coupled receptor 1 family.,

Background

C-X-C motif chemokine receptor 2(CXCR2) Homo sapiens The protein encoded by this gene is a member of the G-protein-coupled receptor family. This protein is a receptor for interleukin 8 (IL8). It binds to IL8 with high affinity, and transduces the signal through a G-protein activated second messenger system. This receptor also binds to chemokine (C-X-C motif) ligand 1 (CXCL1/MGSA), a protein with melanoma growth stimulating activity, and has been shown to be a major component required for serum-dependent melanoma cell growth. This receptor mediates neutrophil migration to sites of inflammation. The angiogenic effects of IL8 in intestinal microvascular endothelial cells are found to be mediated by this receptor. Knockout studies in mice suggested that this receptor controls the positioning of oligodendrocyte precursors in developing spinal cord by arresting their migration. This gene, IL8RA, a gene encoding another high affinity IL8 receptor, as

matters needing attention

Avoid repeated freezing and thawing!

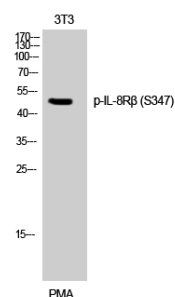
Usage suggestions

This product can be used in immunological reaction related experiments. For more information, please consult technical personnel.

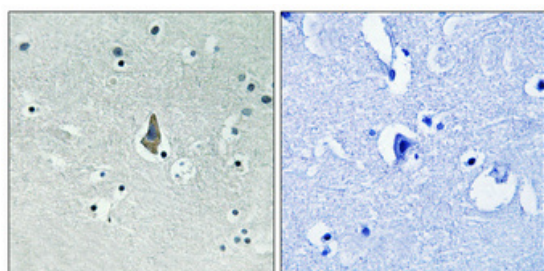
Nanjing BYabscience technology Co.,Ltd



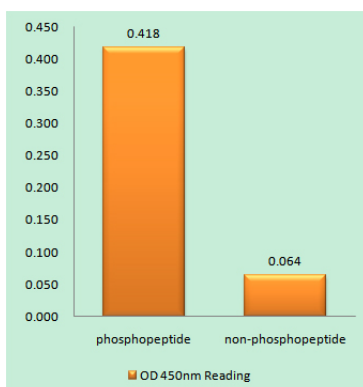
Products Images



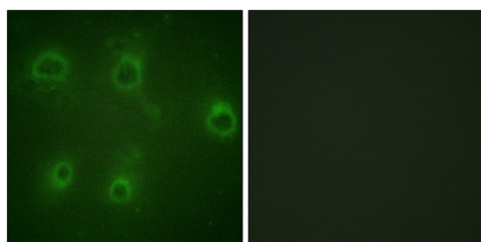
Western Blot analysis of 3T3 cells using
Phospho-IL-8R β (S347) Polyclonal Antibody



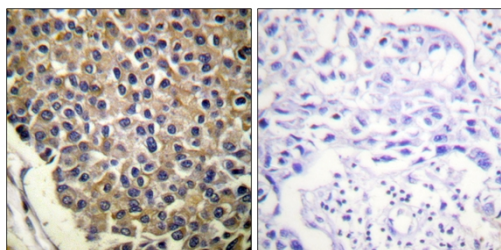
Immunohistochemical analysis of paraffin-embedded Human brain. Antibody was diluted at 1:100(4° overnight). High-pressure and temperature Tris-EDTA,pH8.0 was used for antigen retrieval. Negative contrl (right) obtained from antibody was pre-absorbed by immunogen peptide.



Enzyme-Linked Immunosorbent Assay
(Phospho-ELISA) for Immunogen Phosphopeptide
(Phospho-left) and Non-Phosphopeptide
(Phospho-right), using IL-8R beta/CDw128 beta
(Phospho-Ser347) Antibody



Immunofluorescence analysis of COS7 cells, using
IL-8R beta/CDw128 beta (Phospho-Ser347) Antibody.
The picture on the right is blocked with the phospho
peptide.



Immunohistochemistry analysis of paraffin-embedded human breast carcinoma, using IL-8R beta/CDw128 beta (Phospho-Ser347) Antibody. The picture on the right is blocked with the phospho peptide.