



CCRL1 Polyclonal Antibody

Catalog No	BYab-13167
Isotype	IgG
Reactivity	Human;Mouse
Applications	WB;IF;ELISA
Gene Name	CCRL1
Protein Name	C-C chemokine receptor type 11
Immunogen	The antiserum was produced against synthesized peptide derived from human CCRL1. AA range:5-54
Specificity	CCRL1 Polyclonal Antibody detects endogenous levels of CCRL1 protein.
Formulation	Liquid in PBS containing 50% glycerol, 0.5% BSA and 0.02% sodium azide.
Source	Polyclonal, Rabbit,IgG
Purification	The antibody was affinity-purified from rabbit antiserum by affinity-chromatography using epitope-specific immunogen.
Dilution	Western Blot: 1/500 - 1/2000. Immunofluorescence: 1/200 - 1/1000. ELISA: 1/5000. Not yet tested in other applications.
Concentration	1 mg/ml
Purity	≥90%
Storage Stability	-20°C/1 year
Synonyms	CCRL1; CCBP2; CCR11; VSHK1; C-C chemokine receptor type 11; C-C CKR-11; CC-CKR-11; CCR-11; CC chemokine receptor-like 1; CCRL1; CCX CKR
Observed Band	40kD
Cell Pathway	Early endosome . Recycling endosome . Cell membrane ; Multi-pass membrane protein . Predominantly localizes to endocytic vesicles, and upon stimulation by the ligand is internalized via caveolae. Once internalized, the ligand dissociates from the receptor, and is targeted to degradation while the receptor is recycled back to the cell membrane.
Tissue Specificity	Predominantly expressed in heart. Lower expression in lung, pancreas, spleen, colon, skeletal muscle and small intestine.
Function	function:Receptor for CCL2, CCL8, CCL13, CCL19, CCL21 and CCL25.;similarity:Belongs to the G-protein coupled receptor 1 family.;tissue specificity:Predominantly expressed in heart. Lower expression in lung, pancreas, spleen, colon, skeletal muscle and small intestine.,
Background	The protein encoded by this gene is a member of the G protein-coupled receptor family, and is a receptor for C-C type chemokines. This receptor has been shown

Nanjing BYabscience technology Co.,Ltd



to bind dendritic cell- and T cell-activated chemokines including CCL19/ELC, CCL21/SLC, and CCL25/TECK. A pseudogene of this gene is found on chromosome 6. Alternatively spliced transcript variants encoding the same protein have been described. [provided by RefSeq, Jul 2013],

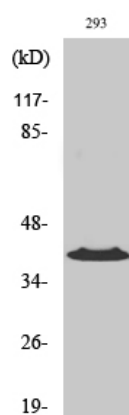
matters needing attention

Avoid repeated freezing and thawing!

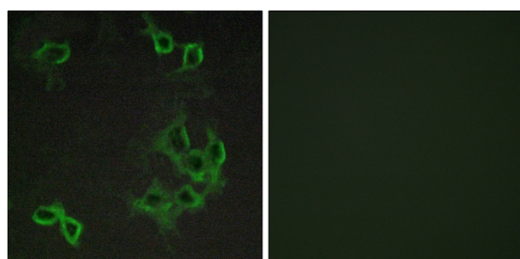
Usage suggestions

This product can be used in immunological reaction related experiments. For more information, please consult technical personnel.

Products Images



Western Blot analysis of various cells using CCRL1 Polyclonal Antibody diluted at 1:1000



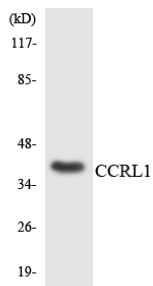
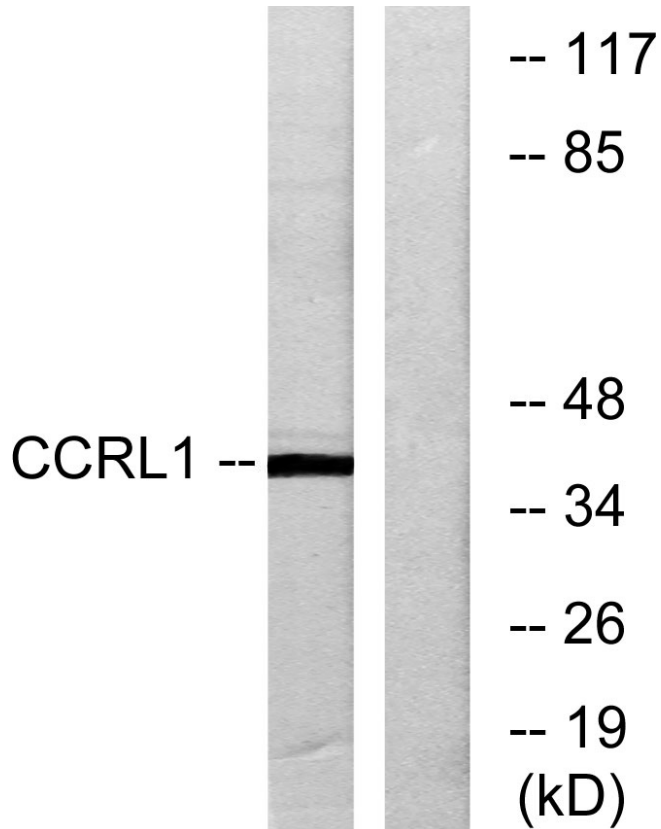
Immunofluorescence analysis of COS7 cells, using CCRL1 Antibody. The picture on the right is blocked with the synthesized peptide.

Nanjing BYabscience technology Co.,Ltd

网址: www.njbybio.com

官方热线: 025-5229-8998

监督电话: 15950492658



Western blot analysis of the lysates from HepG2 cells using CCRL1 antibody.