



EDG-2 Polyclonal Antibody

Catalog No	BYab-13203
Isotype	IgG
Reactivity	Human;Rat
Applications	WB;IHC;IF;ELISA
Gene Name	LPAR1
Protein Name	Lysophosphatidic acid receptor 1
Immunogen	The antiserum was produced against synthesized peptide derived from human EDG2. AA range:5-54
Specificity	EDG-2 Polyclonal Antibody detects endogenous levels of EDG-2 protein.
Formulation	Liquid in PBS containing 50% glycerol, 0.5% BSA and 0.02% sodium azide.
Source	Polyclonal, Rabbit,IgG
Purification	The antibody was affinity-purified from rabbit antiserum by affinity-chromatography using epitope-specific immunogen.
Dilution	Western Blot: 1/500 - 1/2000. Immunohistochemistry: 1/100 - 1/300. Immunofluorescence: 1/200 - 1/1000. ELISA: 1/5000. Not yet tested in other applications.
Concentration	1 mg/ml
Purity	≥90%
Storage Stability	-20°C/1 year
Synonyms	LPAR1; EDG2; LPA1; Lysophosphatidic acid receptor 1; LPA receptor 1; LPA-1; Lysophosphatidic acid receptor Edg-2
Observed Band	38kD
Cell Pathway	Cell surface . Cell membrane ; Multi-pass membrane protein . Endosome . Prior to LPA treatment found predominantly at the cell surface. Internalized after LPA treatment. Colocalizes with RALA in endocytic vesicles after LPA treatment. .
Tissue Specificity	Expressed in many adult organs, including brain, heart, colon, small intestine, placenta, prostate, ovary, pancreas, testes, spleen, skeletal muscle, and kidney. Little or no expression in liver, lung, thymus, or peripheral blood leukocytes (PubMed:9070858). Detected in lung fibroblasts from bronchoalveolar fluid from patients with idiopathic pulmonary fibrosis (PubMed:18066075). Detected in bone marrow-derived mesenchymal stem cells (PubMed:19733258).
Function	function:Receptor for lysophosphatidic acid (LPA), a mediator of diverse cellular activities. Seems to be coupled to the G(i)/G(o), G(12)/G(13), and G(q) families of heteromeric G proteins.,similarity:Belongs to the G-protein coupled receptor 1 family.,tissue specificity:Expressed in many adult organs, including brain, heart,

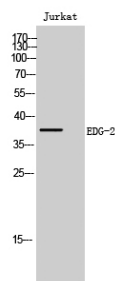
Nanjing BYabscience technology Co.,Ltd



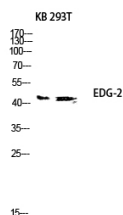
	colon, small intestine, placenta, prostate, ovary, pancreas, testes, spleen, skeletal muscle, and kidney. Little or no expression in liver, lung, thymus, or peripheral blood leukocytes.,
Background	lysophosphatidic acid receptor 1(LPAR1) Homo sapiens The integral membrane protein encoded by this gene is a lysophosphatidic acid (LPA) receptor from a group known as EDG receptors. These receptors are members of the G protein-coupled receptor superfamily. Utilized by LPA for cell signaling, EDG receptors mediate diverse biologic functions, including proliferation, platelet aggregation, smooth muscle contraction, inhibition of neuroblastoma cell differentiation, chemotaxis, and tumor cell invasion. Two transcript variants encoding the same protein have been identified for this gene [provided by RefSeq, Jul 2008],
matters needing attention	Avoid repeated freezing and thawing!
Usage suggestions	This product can be used in immunological reaction related experiments. For more information, please consult technical personnel.



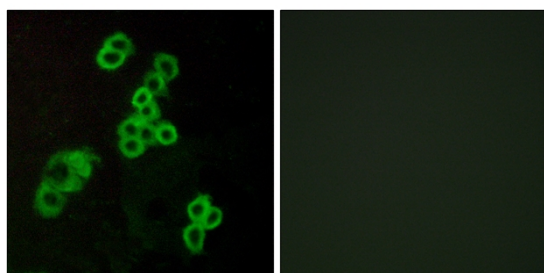
Products Images



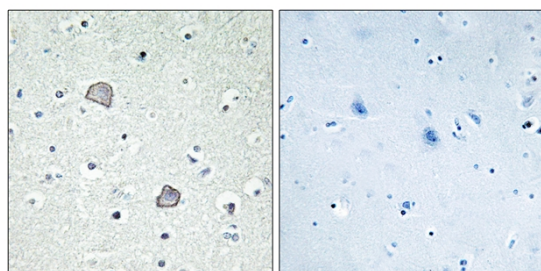
Western Blot analysis of Jurkat cells using EDG-2 Polyclonal Antibody diluted at 1:500



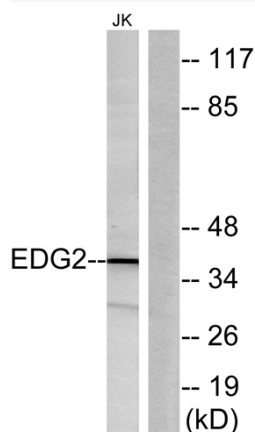
Western blot analysis of KB 293T cells using EDG-2 antibody. Antibody was diluted at 1:500



Immunofluorescence analysis of MCF7 cells, using EDG2 Antibody. The picture on the right is blocked with the synthesized peptide.



Immunohistochemistry analysis of paraffin-embedded human brain tissue, using EDG2 Antibody. The picture on the right is blocked with the synthesized peptide.



Western blot analysis of lysates from Jurkat cells, using EDG2 Antibody. The lane on the right is blocked with the synthesized peptide.

Nanjing BYabscience technology Co.,Ltd

网址: www.njbybio.com

官方热线: 025-5229-8998

监督电话: 15950492658